

PARIS, TEXAS

AL-803 (FAA)

VOR/DME PRX <b>113.6</b> Chan <b>83</b>	APP CRS <b>350°</b>	Rwy Idg TDZE Apt Elev	<b>6002</b> <b>532</b> <b>548</b>
---	------------------------	-----------------------------	---

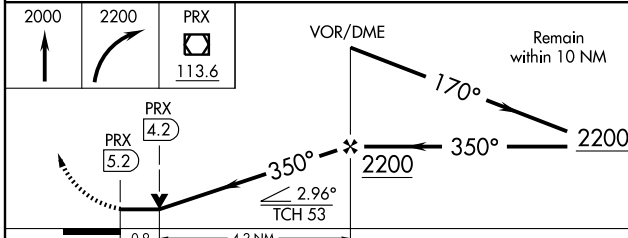
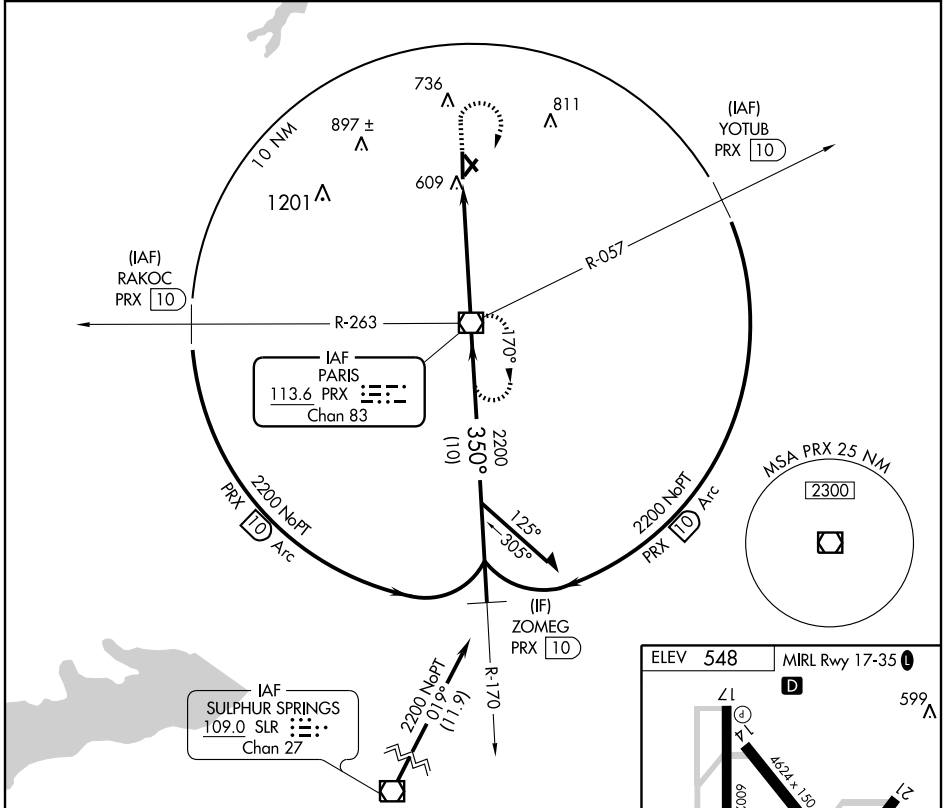
# VOR RWY 35

PARIS/ COX FIELD (PRX)

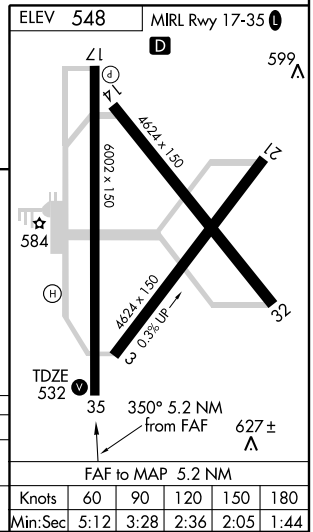
**▼** If local altimeter setting not received, use Sulphur Springs altimeter setting and increase all MDAs 80 feet. Visibility reduction by helicopters NA. VDP NA when using Sulphur Springs altimeter setting.

**MISSED APPROACH:** Climb to 2000 then climbing right turn to 2200 direct PRX VOR/DME.

AWOS-3 <b>119.675</b>	FORT WORTH CENTER <b>124.875</b>	FORT WORTH RADIO <b>122.25</b>	UNICOM <b>122.975</b> (CTAF) <b>0</b>
--------------------------	-------------------------------------	-----------------------------------	--



CATEGORY	A	B	C	D
S-35	880-1	348 (400-1)		880-1¼ 348 (400-1¼)
CIRCLING	960-1 412 (500-1)	1000-1 452 (500-1)	1000-1½ 452 (500-1½)	1100-2 552 (600-2)



SC-2, 22 OCT 2009 to 19 NOV 2009

SC-2, 22 OCT 2009 to 19 NOV 2009

PARIS, TEXAS  
Amdt 2 09015

33° 38' N-95° 27' W

# PARIS/ COX FIELD (PRX) VOR RWY 35

Knots	60	90	120	150	180
Min:Sec	5:12	3:28	2:36	2:05	1:44