

PARIS, TEXAS

AL-803 (FAA)

RNAV (GPS) RWY 35

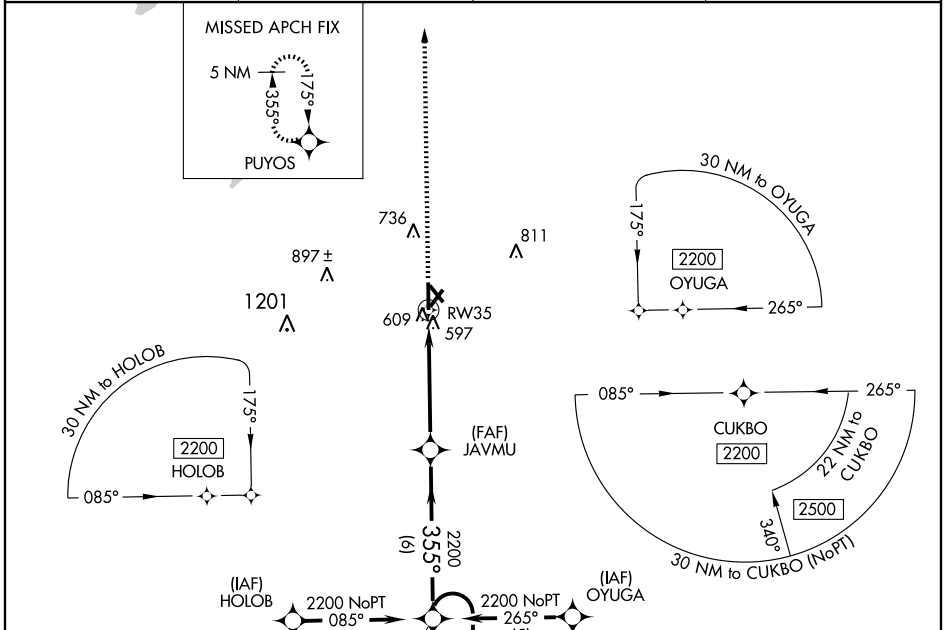
PARIS/ COX FIELD (P.R.X)

WAAS CH 63001 W35A	APP CRS 355°	Rwy Idg 6002 TDZE 532 Apt Elev 548
--	------------------------	---

⚠ DME/DME RNP-0.3 NA. Visibility reduction by helicopters NA. If local altimeter setting not received, use Sulphur Springs altimeter setting and increase all DAs/MDAs 80 feet.
⚠ For uncompensated BARO-VNAV systems, LNAV/VNAV NA below -1.6°C (4°F) or above 47°C (118°F). BARO-VNAV and VDP NA when using Sulphur Springs altimeter setting.

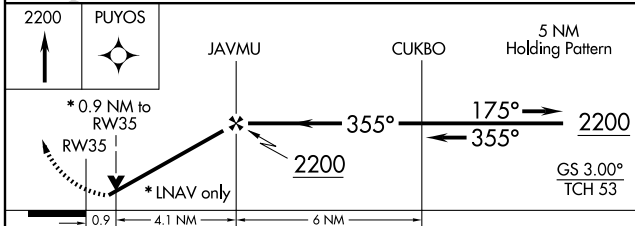
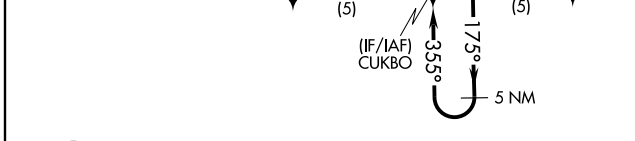
MISSED APPROACH: Climb to 2200 direct PUYOS and hold.

AWOS-3 119.675	FORT WORTH CENTER 124.875	FORT WORTH RADIO 122.25	UNICOM 122.975 (CTAF) 0
--------------------------	-------------------------------------	-----------------------------------	--

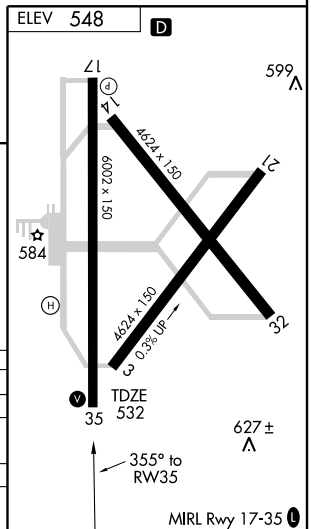


SC-2, 22 OCT 2009 to 19 NOV 2009

SC-2, 22 OCT 2009 to 19 NOV 2009



CATEGORY	A	B	C	D
LPV DA		782-¾	250 (300-¾)	
LNAV/DA/VNAV		925-1¼	393 (400-1¼)	
LNAV MDA		860-1	328 (400-1)	
CIRCLING	960-1¼ 412 (500-1¼)	1000-1¼ 452 (500-1¼)	1000-1½ 452 (500-1½)	1100-2 552 (600-2)



PARIS, TEXAS
Orig 09015

33° 38' N-95° 27' W

RNAV (GPS) RWY 35

PARIS/ COX FIELD (P.R.X)

MIRL Rwy 17-35 **0**