

PARIS, TEXAS

AL-803 (FAA)

RNAV (GPS) RWY 17

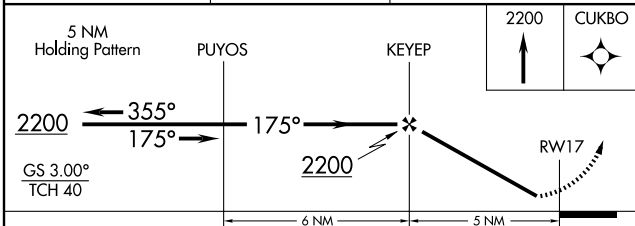
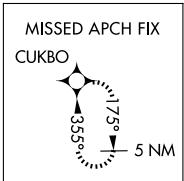
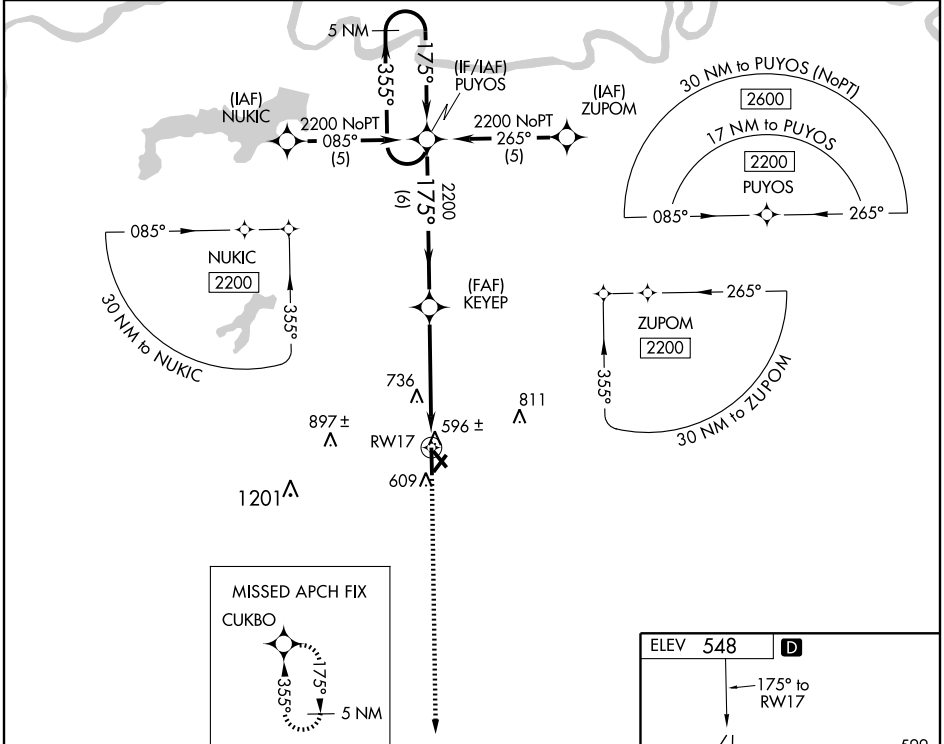
PARIS/ COX FIELD (P.R.X)

WAAS CH 69401 W17A	APP CRS 175°	Rwy Idg TDZE Apt Elev	6002 541 548
--	------------------------	-----------------------------	---

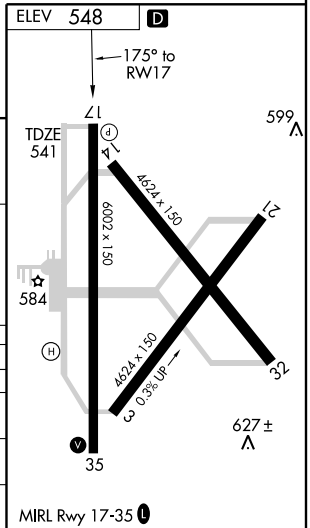
▼ DME/DME RNP-0.3 NA. Visibility reduction by helicopters NA. If local altimeter setting not received, use Sulphur Springs altimeter setting and increase all DAs/MDAs 80 feet.
▲ For uncompensated BARO-VNAV systems, LNAV/VNAV NA below -1.6°C (4°F) or above 47°C (118°F). BARO-VNAV NA when using Sulphur Springs altimeter setting.

MISSED APPROACH: Climb to 2200 direct CUKBO and hold.

AWOS-3 119.675	FORT WORTH CENTER 124.875	FORT WORTH RADIO 122.25	UNICOM 122.975 (CTAF) D
--------------------------	-------------------------------------	-----------------------------------	--



CATEGORY	A	B	C	D
LPV DA		791-1	250 (300-1)	
LNAV/DA VNAV		846-1	305 (300-1)	
LNAV MDA	1040-1	499 (500-1)	1040-1½ 499 (500-1½)	1040-1½ 499 (500-1½)
CIRCLING	1040-1	492 (500-1)	1040-1½ 492 (500-1½)	1100-2 552 (600-2)



PARIS, TEXAS
Orig 09015

33° 38' N-95° 27' W

RNAV (GPS) RWY 17

SC-2, 22 OCT 2009 to 19 NOV 2009

SC-2, 22 OCT 2009 to 19 NOV 2009