

RNAV (GPS) RWY 32

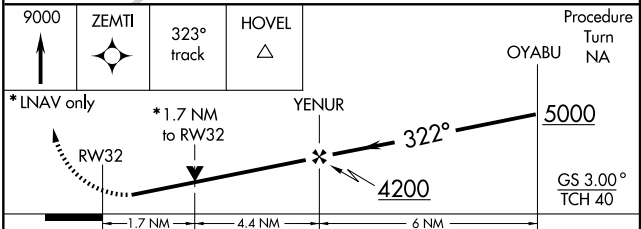
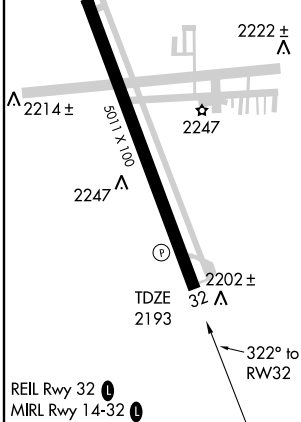
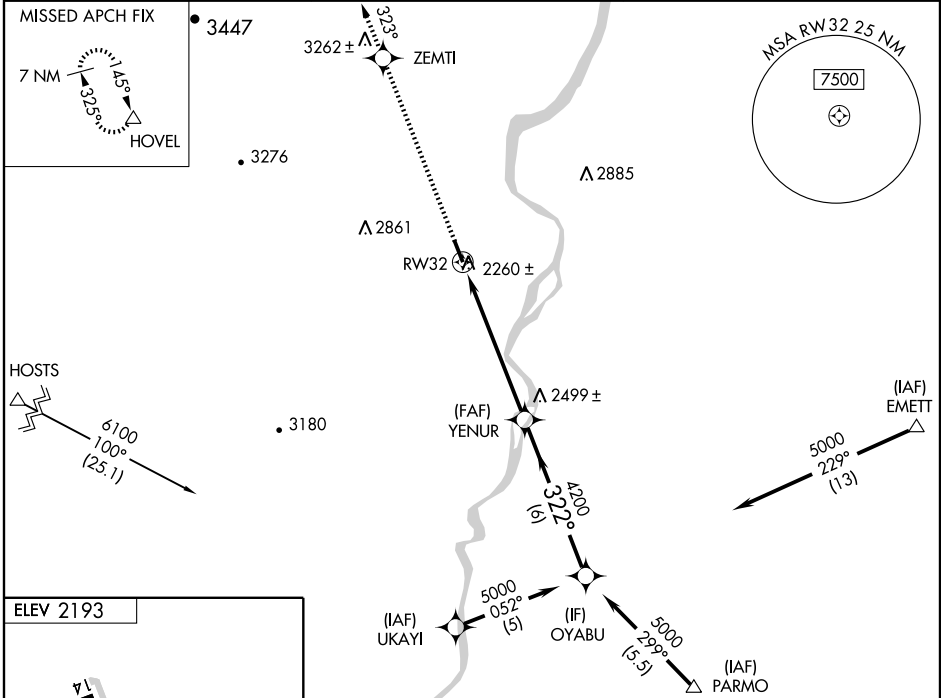
ONTARIO MUNI (ONO)

| | | |
|---------------------------------|------------------------|---|
| WAAS CH 87007 W32A | APP CRS 322° | Rwy ldg TDZE 2193 Apt Elev 2193 |
|---------------------------------|------------------------|---|

▼ For uncompensated Baro-VNAV systems, LNAV/VNAV NA below -19°C (-2°F) or above 44°C (111°F). Baro-VNAV and VDP NA when using Caldwell altimeter setting.
▲ DME/DME RNP -0.3 NA. Visibility reduction by helicopters NA.
 When local altimeter setting not received, use Caldwell altimeter setting and increase DA/MDA 100 feet, and increase LPV and LNAV/VNAV visibility ¼ mile all Cats, LNAV Cat C and D and Circling Cat C visibility ¼ mile.

MISSED APPROACH: Climb to 9000 direct ZEMTI and via 323° track to HOVEL and hold, continue climb-in-hold to 9000.

| | | |
|------------------------|--|-------------------------------|
| ASOS 135,275 | SALT LAKE CENTER 128.05 387.15 | UNICOM 122.8 (CTAF) |
|------------------------|--|-------------------------------|



| CATEGORY | A | B | C | D |
|--------------|---------|-------------|-------------------------|-------------------------|
| LPV DA | 2443-1 | | 250 (300-1) | |
| LNAV/DA VNAV | 2510-1¼ | | 317 (400-1¼) | |
| LNAV MDA | 2760-1 | 567 (600-1) | 2760-1½ 567 (600-1½) | 2760-1¾ 567 (600-1¾) |
| CIRCLING | 2760-1 | 567 (600-1) | 2760-1½ 567 (600-1½) | 2760-2 567 (600-2) |

NW-1, 22 OCT 2009 to 19 NOV 2009

NW-1, 22 OCT 2009 to 19 NOV 2009