

# RNAV (GPS) RWY 14

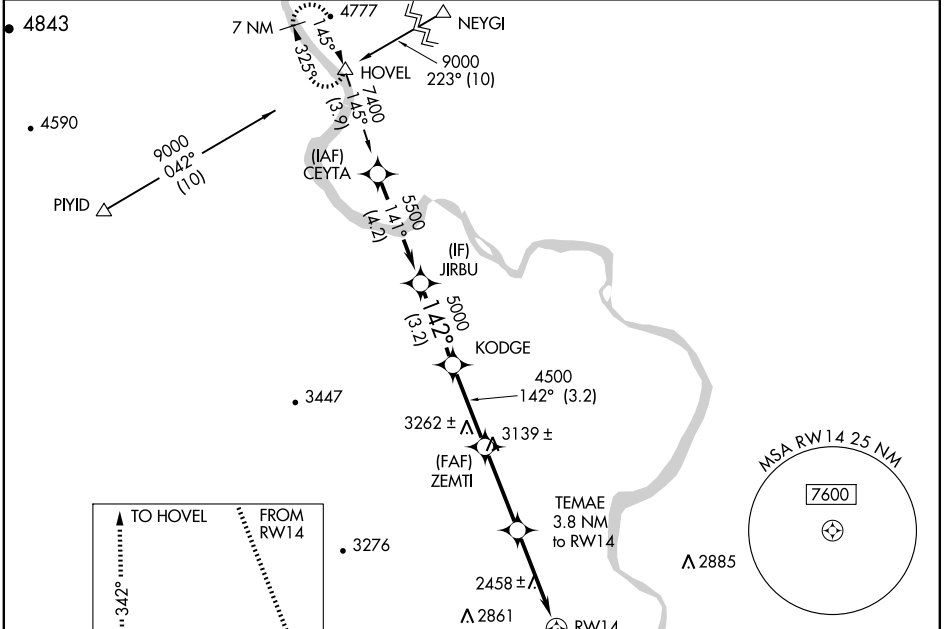
ONTARIO MUNI (ONO)

WAAS CH <b>78207</b> <b>W14A</b>	APP CRS <b>142°</b>	Rwy Idg TDZE Apt Elev	<b>5011</b> <b>2193</b> <b>2193</b>
--	------------------------	-----------------------------	---

**▼** Baro-VNAV NA when using Caldwell altimeter setting. For uncompensated Baro-VNAV systems, LNAV/VNAV NA below -19°C (-2°F) or above 45°C (113°F). DME/DME RNP -0.3 NA.  
**▲** Visibility reduction by helicopters NA. When local altimeter setting not received, use Caldwell altimeter setting and increase DA/MDA 100 feet, and increase LPV visibility ¼ mile all Cats, LNAV/VNAV visibility ½ mile all Cats, LNAV Cat C and D ¼ mile, Circling Cat C ¼ mile.

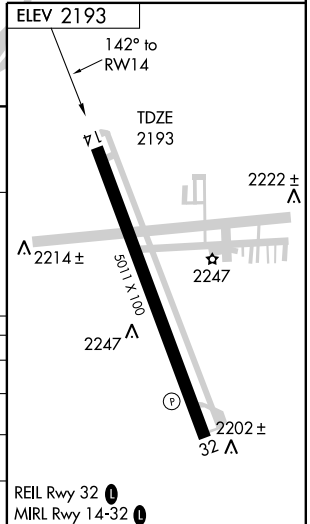
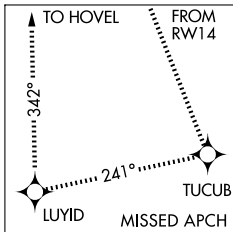
**MISSED APPROACH:** Climb to 9000 direct TUCUB and right turn via 241° track to LUYID and right turn via 342° track to HOVEL and hold.

ASOS <b>135.275</b>	SALT LAKE CENTER <b>128.05 387.15</b>	UNICOM <b>122.8 (CTAF)</b>
------------------------	--	-------------------------------



NW-1, 22 OCT 2009 to 19 NOV 2009

NW-1, 22 OCT 2009 to 19 NOV 2009



Procedure Turn NA	JIRBU	9000	TUCUB	LUYID	HOVEL
GS 3.00° TCH 40	5500	5000	4500	3420*	
	3.2 NM	3.2 NM	3.2 NM	3.8 NM	
CATEGORY	A	B	C	D	
LPV DA		2744-2	551 (600-2)		
LNAV/ VNAV DA		2781-2	588 (600-2)		
LNAV MDA	2720-1	527 (600-1)	2720-1½ 527 (600-1½)	2720-1¾ 527 (600-1¾)	
CIRCLING	2720-1 527 (600-1)	2760-1 567 (600-1)	2760-1½ 567 (600-1½)	2760-2 567 (600-2)	