

LUMBERTON, NORTH CAROLINA

AL-800 (FAA)

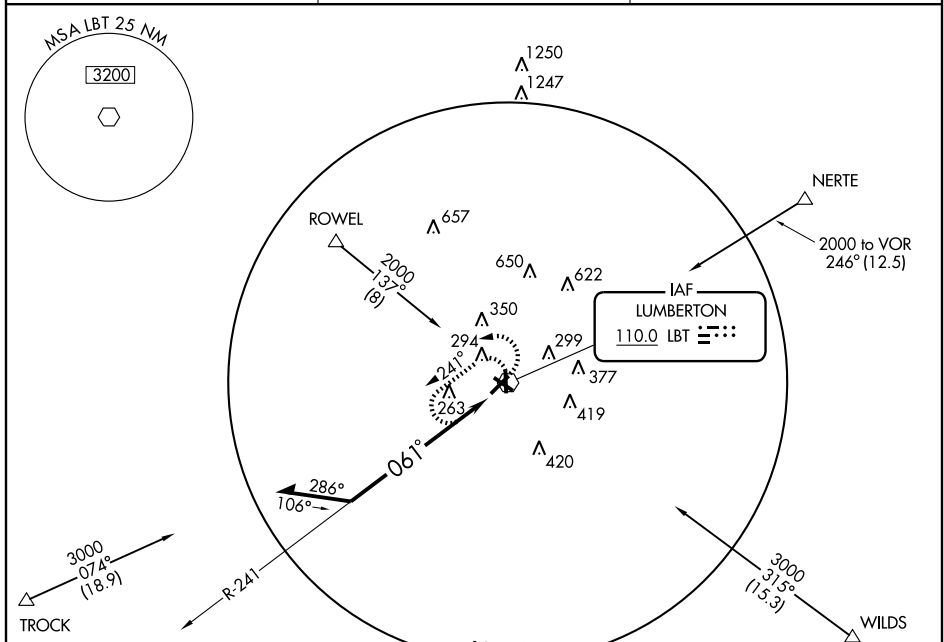
VOR RWY 5

LUMBERTON MUNI (LBT)

VOR LBT 110.0	APP CRS 061°	Rwy Idg TDZE Apt Elev	5340 124 126
-------------------------	------------------------	-----------------------------	---

▼ MISSED APPROACH: Climbing left turn to 2000 in LBT VOR holding pattern.
▲ NA

ASOS 134.775	FAYETTEVILLE APP CON 133.0 295.0	UNICOM 122.8 (CTAF)
------------------------	--	-------------------------------



ELEV 126 Rwy 5 Idg 5340'
 Rwy 31 Idg 4408'

TDZE 124

061° to VOR

MIRL Rwy 5-23
 REIL Rws 5 and 23

Knots	60	90	120	150	180
Min:Sec					

CATEGORY	A	B	C	D
S-5	620-1 496 (500-1)		620-1¼ 496 (500-1¼)	NA
CIRCLING	660-1 534 (600-1)		660-1½ 534 (600-1½)	NA

LUMBERTON, NORTH CAROLINA
 Amdt 8B 03079

34°37'N-79°04'W

LUMBERTON MUNI (LBT)
VOR RWY 5

SE-2, 22 OCT 2009 to 19 NOV 2009

SE-2, 22 OCT 2009 to 19 NOV 2009