

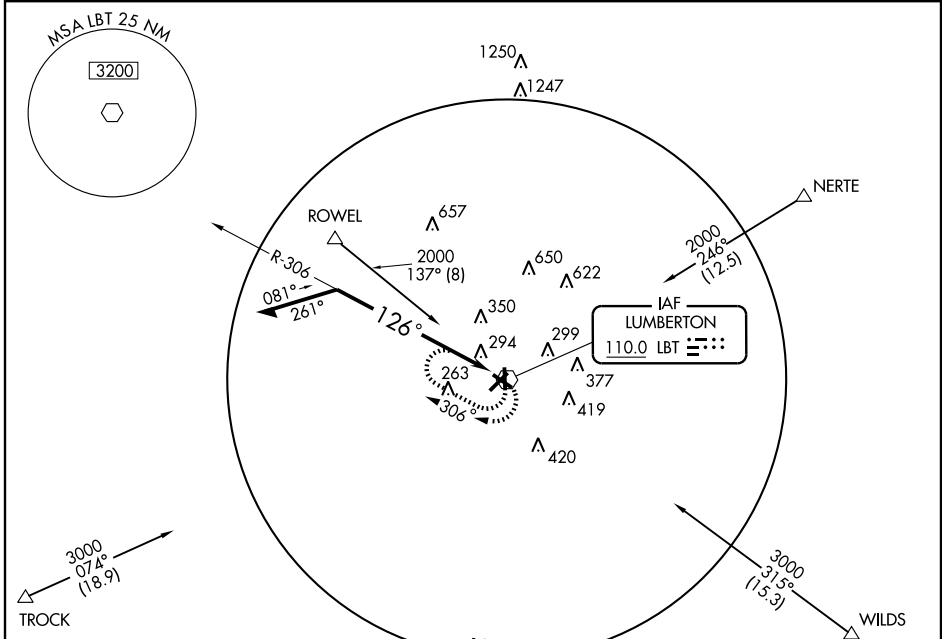
VOR RWY 13

LUMBERTON MUNI (LBT)

VOR LBT 110.0	APP CRS 126°	Rwy ldg 4998 TDZE 125 Apt Elev 126
-------------------------	------------------------	---

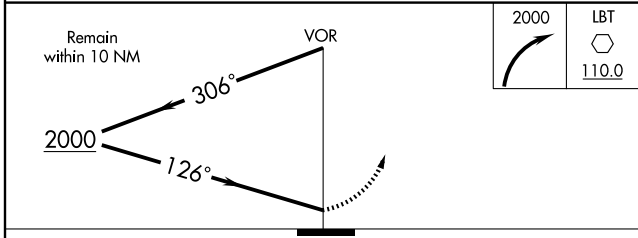
<p>NA Straight-in minimums not authorized at night.</p>	<p>MISSED APPROACH: Climbing right turn to 2000 in LBT VOR holding pattern.</p>
--	---

<p>ASOS 134.775</p>	<p>FAYETTEVILLE APP CON 133.0 295.0</p>	<p>UNICOM 122.8 (CTAF)</p>
--------------------------------	--	---------------------------------------



SE-2, 22 OCT 2009 to 19 NOV 2009

SE-2, 22 OCT 2009 to 19 NOV 2009



ELEV 126	Rwy 5 ldg 5340'
	Rwy 31 ldg 4408'

MIRL Rwy 5-23
REIL Rws 5 and 23

Knots	60	90	120	150	180
Min:Sec					

CATEGORY	A	B	C	D
S-13	660-1 535 (600-1)		660-1½ 535 (600-1½)	NA
CIRCLING	660-1 534 (600-1)		660-1½ 534 (600-1½)	NA