

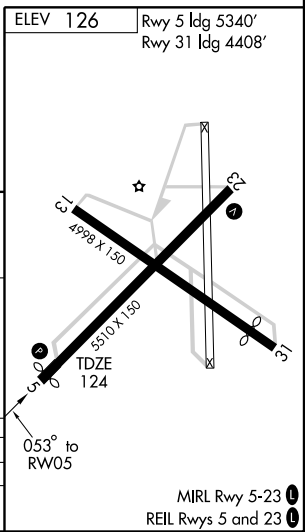
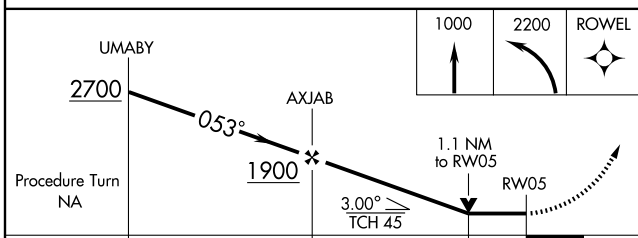
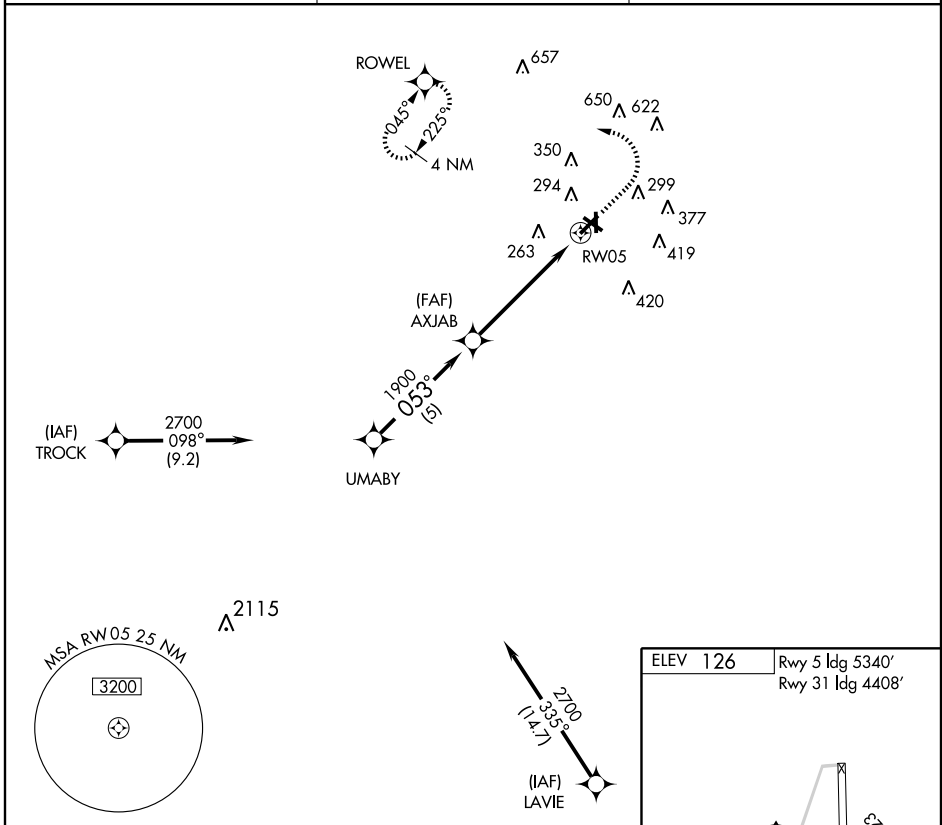
# GPS RWY 5

LUMBERTON MUNI (LBT)

APP CRS	Rwy Idg	<b>5340</b>
<b>053°</b>	TDZE	<b>124</b>
	Apt Elev	<b>126</b>

<p>▼</p> <p>▲ NA</p>	<p>MISSED APPROACH: Climb to 1000 then climbing left turn to 2200 direct ROWEL WP and hold.</p>
----------------------	---

<p>ASOS</p> <p><b>134.775</b></p>	<p>FAYETTEVILLE APP CON</p> <p><b>133.0 295.0</b></p>	<p>UNICOM</p> <p><b>122.8 (CTAF) 0</b></p>
-----------------------------------	---	--



CATEGORY	A	B	C	D
S-5	520-1 396 (400-1)			NA
CIRCLING	660-1	534 (600-1)	660-1½ 534 (600-1½)	NA

SE-2, 22 OCT 2009 to 19 NOV 2009

SE-2, 22 OCT 2009 to 19 NOV 2009