

PULLMAN/MOSCOW, WASHINGTON

AL-798 (FAA)

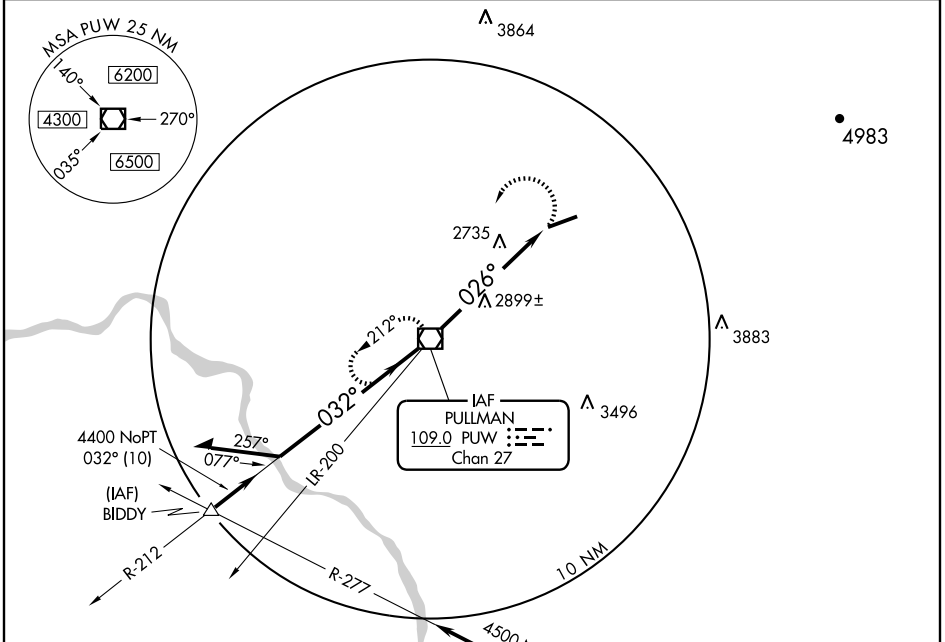
VOR/DME PUV 109.0 Chan 27	APP CRS 026°	Rwy Idg TDZE Apt Elev 6200 2540 2556
--	------------------------	--

VOR RWY 5

PULLMAN/MOSCOW RGNL (PUW)

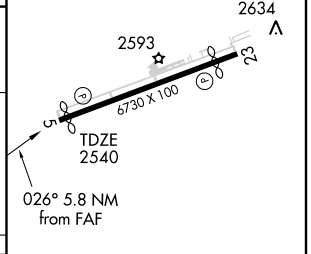
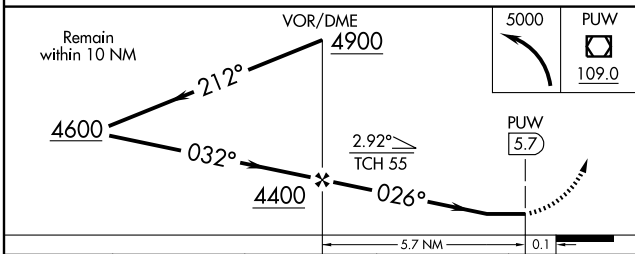
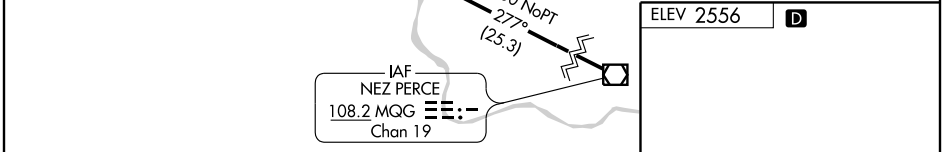
▼ When VGSI inoperative, circling Rwy 5 NA at night. Visibility reduction by helicopters NA. MISSED APPROACH: Climbing left turn to 5000 direct PUV VOR/DME and hold.

ASOS 135.675	SEATTLE CENTER 123.95 282.3	UNICOM 122.8 (CTAF) 0
------------------------	---------------------------------------	--



NW-1, 22 OCT 2009 to 19 NOV 2009

NW-1, 22 OCT 2009 to 19 NOV 2009



CATEGORY	A	B	C	D	HIRL Rwy 5-23 0
S-5	3120-1	580 (600-1)	3120-1½ 580 (600-1½)	3120-1¾ 580 (600-1¾)	REIL Rwys 5 and 23 0
CIRCLING	3220-1	664 (700-1)	3220-1¾ 664 (700-1¾)	3220-2 664 (700-2)	FAF to MAP 5.7 NM
					Knots
					60 90 120 150 180
					Min:Sec 5:42 3:48 2:51 2:17 1:54

PULLMAN/MOSCOW, WASHINGTON
Amdt 8A 09015

46°45'N-117°-07'W

PULLMAN/MOSCOW RGNL (PUW)
VOR RWY 5