

PULLMAN/MOSCOW, WASHINGTON

AL-798 (FAA)

# RNAV (GPS) RWY 23

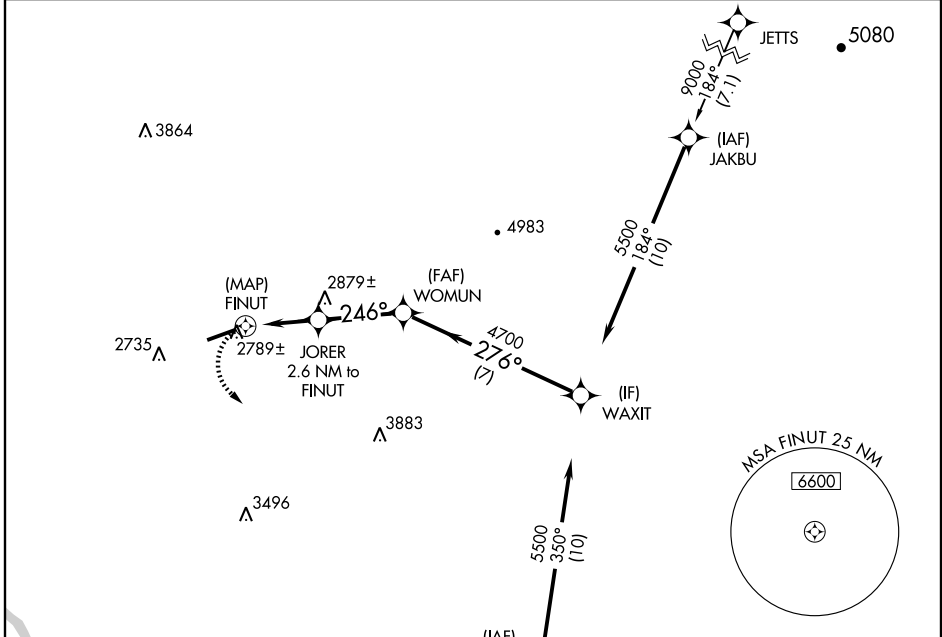
PULLMAN/MOSCOW RGNL (PUW)

APP CRS	Rwy Idg	<b>5240</b>
<b>246°</b>	TDZE	<b>2549</b>
	Apt Elev	<b>2556</b>

**▽** DME/DME RNP-0.3 NA.  
Visibility reduction by helicopters NA.

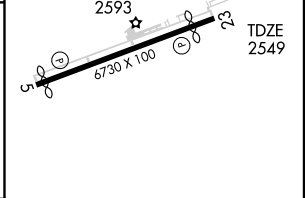
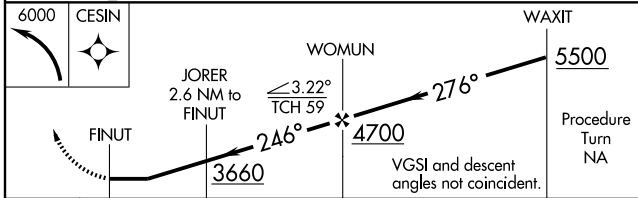
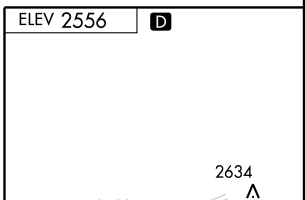
MISSED APPROACH: Climbing left turn to 6000 direct CESIN and hold.

ASOS <b>135.675</b>	SEATTLE CENTER <b>123.95 282.3</b>	UNICOM <b>122.8</b> (CTAF) <b>①</b>
------------------------	---------------------------------------	----------------------------------------



NW-1, 22 OCT 2009 to 19 NOV 2009

NW-1, 22 OCT 2009 to 19 NOV 2009



	0.5	2.6 NM	3 NM	7 NM
CATEGORY	A	B	C	D
RNAV MDA	3180-1	631 (700-1)	3180-1 <sup>3</sup> / <sub>4</sub> 631 (700-1 <sup>3</sup> / <sub>4</sub> )	3180-2 631 (700-2)
CIRCLING	3220-1	664 (700-1)	3220-1 <sup>3</sup> / <sub>4</sub> 664 (700-1 <sup>3</sup> / <sub>4</sub> )	3220-2 664 (700-2)

HIRL Rwy 5-23 **①**  
REIL Rws 5 and 23 **①**

PULLMAN/MOSCOW, WASHINGTON  
Orig-A 09015

46°45'N-117°07'W

# RNAV (GPS) RWY 23