

SILVER CITY, NEW MEXICO

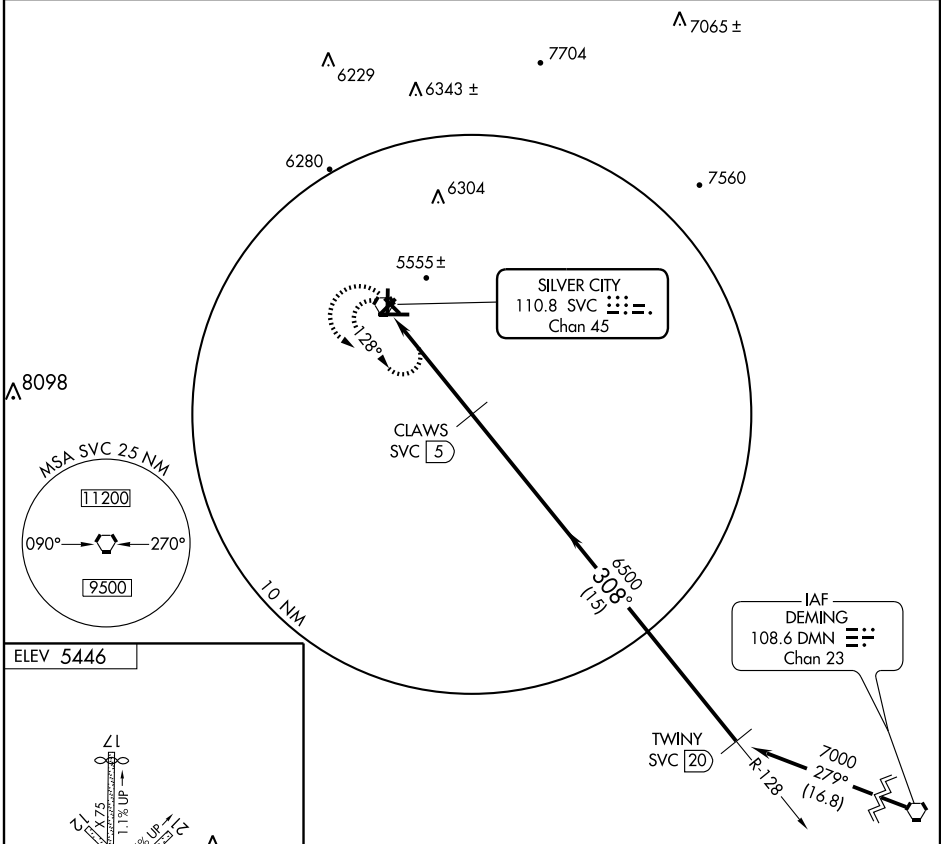
AL-793 (FAA)

VORTAC SVC 110.8 Chan 45	APP CRS 308°	Rwy Idg TDZE Apt Elev 5446	N/A N/A 5446
---------------------------------------	------------------------	--	---

VOR/DME-B
SILVER CITY/GRANT COUNTY (SVC)

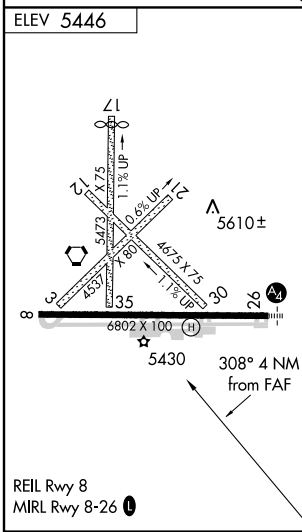
⚠ When local altimeter setting not received, procedure not authorized. **MISSED APPROACH:** Climbing left turn to 8000 via SVC R-128 then reverse course to SVC VORTAC and hold.

AWOS-3 126.725	ALBUQUERQUE CENTER 134.45 327.15	UNICOM 122.8 (CTAF)
--------------------------	--	-------------------------------



SW-1, 22 OCT 2009 to 19 NOV 2009

SW-1, 22 OCT 2009 to 19 NOV 2009



8000 SVC R-128	Reverse Course	SVC 110.8	TWINY SVC 20	
VORTAC SVC 1	CLAWS SVC 5	6500	7000	
4 NM	15 NM	Procedure Turn NA		
CATEGORY	A	B	C	D
CIRCLING	5920-1 477 (500-1)	5940-1 497 (500-1)	5960-1½ 517 (600-1½)	6020-2 577 (600-2)

SILVER CITY, NEW MEXICO
Amdt 3A 09127

32°38'N-108°09'W

SILVER CITY/GRANT COUNTY (SVC)
VOR/DME-B