

SILVER CITY, NEW MEXICO

AL-793 (FAA)

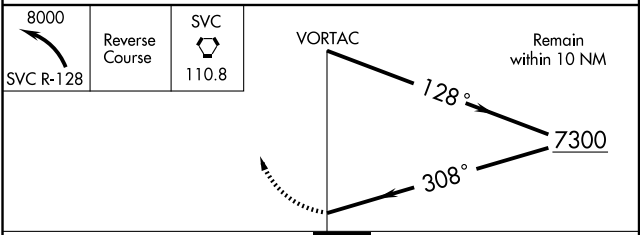
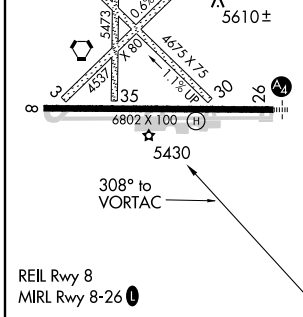
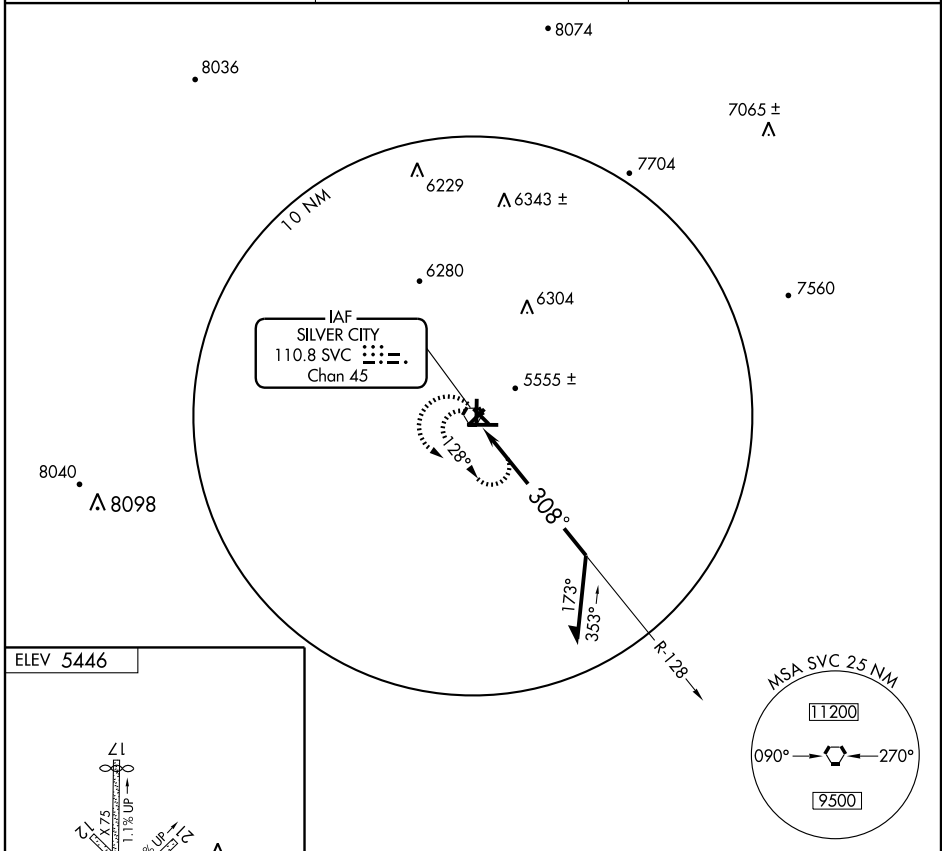
VORTAC SVC 110.8 Chan 45	APP CRS 308°	Rwy Idg TDZE Apt Elev N/A N/A 5446
---------------------------------------	------------------------	--

VOR-A

SILVER CITY/GRANT COUNTY (SVC)

<p>⚠ When local altimeter setting not received, procedure not authorized.</p>	<p>MISSED APPROACH: Climbing left turn to 8000 via SVC R-128, then reverse course to SVC VORTAC and hold.</p>
--	---

AWOS-3 126.725	ALBUQUERQUE CENTER 134.45 327.15	UNICOM 122.8 (CTAF)
--------------------------	--	-------------------------------



CATEGORY	A	B	C	D
CIRCLING	5920-1 477 (500-1)	5940-1 497 (500-1)	5960-1½ 517 (600-1½)	6020-2 577 (600-2)

SILVER CITY, NEW MEXICO
Amdt 7A 09127

32°38'N-108°09'W

SILVER CITY/GRANT COUNTY (SVC)

VOR-A

SW-1, 22 OCT 2009 to 19 NOV 2009

SW-1, 22 OCT 2009 to 19 NOV 2009