

RNAV (GPS) RWY 8

SILVER CITY/GRANT COUNTY (SVC)

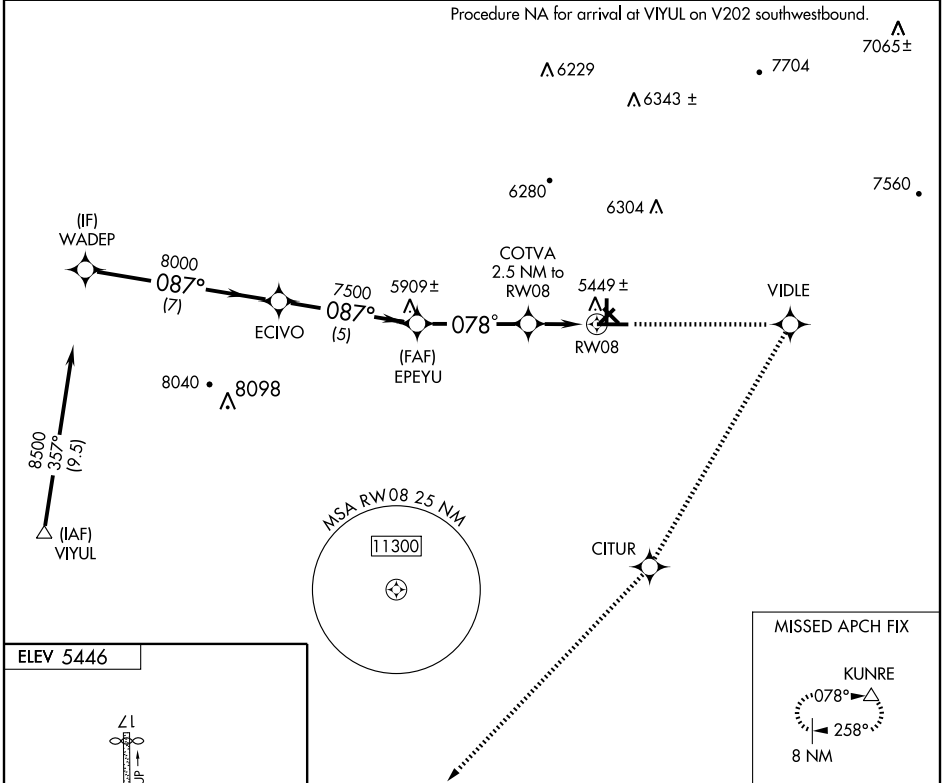
APP CRS	Rwy Idg	6802
078°	TDZE	5386
	Apt Elev	5446

▽ DME/DME RNP: 0.3 NA.
 If local altimeter setting not received, procedure NA.
 Circling Rwy 3 NA at night.
 Visibility reduction by helicopters NA.

MISSED APPROACH: Climb to 10000 direct VIDLE and right turn via 198° track to CITUR and via 212° track to KUNRE and hold.

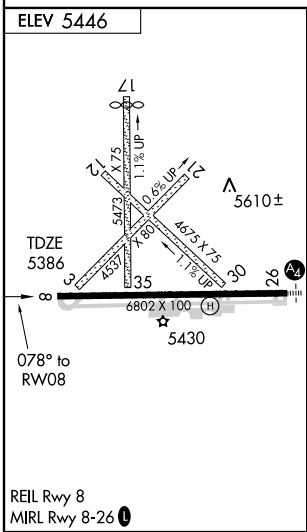
AWOS-3 126.725	ALBUQUERQUE CENTER 134.45 327.15	UNICOM 122.8 (CTAF) 0
--------------------------	--	---------------------------------

Procedure NA for arrival at VIYUL on V202 southwestbound.



SW-1, 22 OCT 2009 to 19 NOV 2009

SW-1, 22 OCT 2009 to 19 NOV 2009



WADEP	ECIVO	EPEYU	COTVA	CITUR	212° track	KUNRE
8500	8000	7500	6200	10000	VIDLE	198° track
Procedure Turn NA		3.05° TCH 33	0.9 NM to RW08			
7 NM	5 NM	3.9 NM	1.6	0.9		
CATEGORY	A	B	C	D		
LNAV MDA	5700-1		314 (300-1)			
CIRCLING	5880-1 434 (500-1)	5900-1 454 (500-1)	5940-1½ 494 (500-1½)	6000-2 554 (600-2)		