

VERNAL, UTAH

AL-792 (FAA)

# VOR RWY 34

VERNAL RGNL (VEL)

VOR/DME VEL <b>108.2</b> Chan 19	APP CRS <b>331°</b>	Rwy Idg TDZE Apt Elev <b>6201</b> <b>5265</b> <b>5279</b>
--	------------------------	--

MISSED APPROACH: Climbing right turn to 8000 direct VEL VOR/DME and hold.

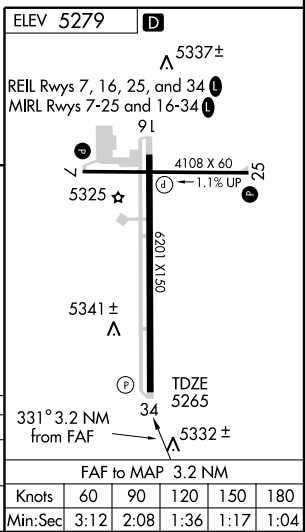
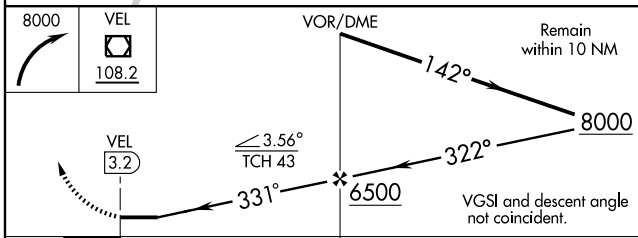
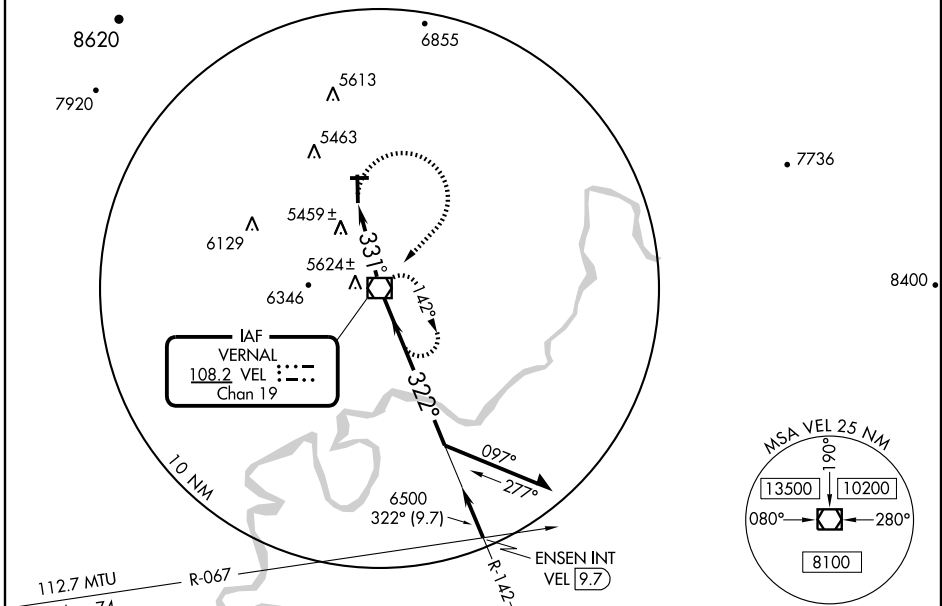
ASOS  
**135.175**

CEDAR CITY RADIO  
**122.35**

UNICOM  
**122.7** (CTAF) **1**

SW-4, 22 OCT 2009 to 19 NOV 2009

SW-4, 22 OCT 2009 to 19 NOV 2009



VERNAL, UTAH  
Amdt 8 09295

40°26'N-109°31'W

# VERNAL RGNL (VEL)

## VOR RWY 34