

# VOR RWY 23

BLUEFIELD / MERCER COUNTY (BLF)

VORTAC BLF <b>110.0</b> Chan <b>37</b>	APP CRS <b>231°</b>	Rwy Idg <b>4743</b> TDZE <b>2857</b> Apt Elev <b>2857</b>
----------------------------------------------	------------------------	-----------------------------------------------------------------

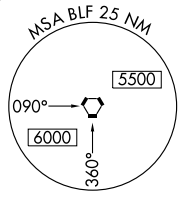
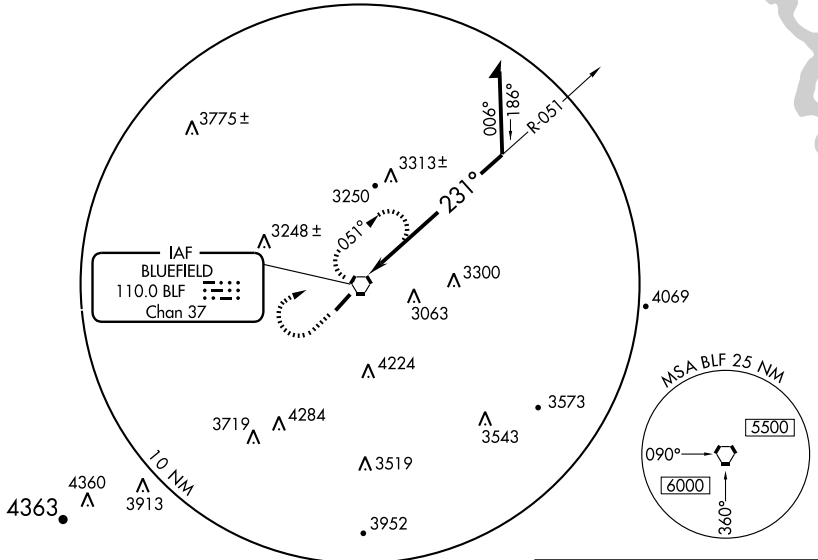
**⚠** When local altimeter setting not received, use Beckley altimeter setting.  
Circling not authorized E of Rwy 5-23.

**MISSED APPROACH:** Climb to 3800 then climbing right turn to 5300 direct BLF VORTAC and hold.

ASOS  
**132.725**

INDIANAPOLIS CENTER  
**126.575 257.85**

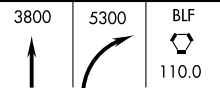
CTAF  
**122.9**



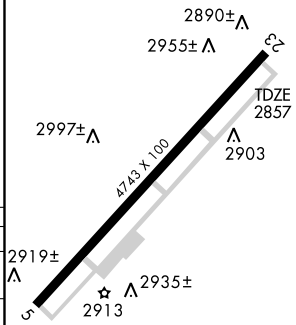
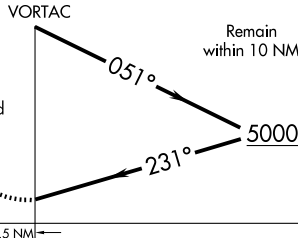
NE-4, 22 OCT 2009 to 19 NOV 2009

NE-4, 22 OCT 2009 to 19 NOV 2009

ELEV 2857



Maintain 5300 or above until established outbound for procedure turn.



CATEGORY	A	B	C	D
S-23	3500-1	643 (700-1)	3500-1¾ 643 (700-1¾)	3500-2 643 (700-2)
CIRCLING	3500-1	643 (700-1)	3520-1¾ 663 (700-1¾)	3520-2 663 (700-2)

**BECKLEY ALTIMETER SETTING MINIMUMS**

S-23	3840-1¼ 983 (1000-1¼)	3840-1½ 983 (1000-1½)	3840-3 983 (1000-3)
CIRCLING	3840-1¼ 983 (1000-1¼)	3840-1½ 983 (1000-1½)	3840-3 983 (1000-3)

HIRL Rwy 5-23  
REIL Rws 5 and 23