

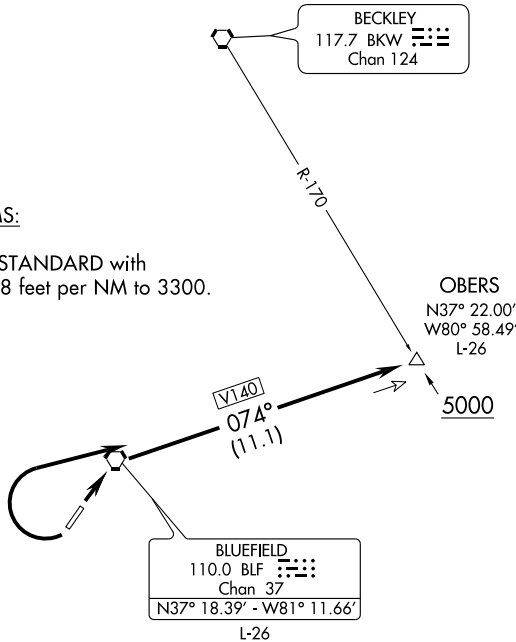
OBERS THREE DEPARTURE

INDANAPOLIS CENTER
126.575 257.85
CTAF 122.9
ASOS 132.725

TAKE-OFF MINIMUMS:

Rwy 5: STANDARD.

Rwy 23: 400-2¼ or STANDARD with minimum climb of 238 feet per NM to 3300.



NOTE: Chart not to scale.

NE-4, 22 OCT 2009 to 19 NOV 2009

NE-4, 22 OCT 2009 to 19 NOV 2009

DEPARTURE ROUTE DESCRIPTION

TAKE-OFF RUNWAY 5: Climb via BLF R-074 to cross OBERS INT at or above 5000' or altitude assigned by ATC. Thence

TAKE-OFF RUNWAY 23: Climbing right turn via BLF R-074 to cross OBERS INT at or above 5000' or altitude assigned by ATC. Thence

. . . . via ATC assigned route.

TAKE-OFF OBSTACLES

Rwy 5: Trees beginning 14' from DER, 370' left of centerline, up to 100' AGL/2939' MSL.
Trees beginning 15' from DER, 391' right of centerline, up to 100' AGL/2959' MSL.

Rwy 23: Trees beginning at DER, 258' left of centerline up to 100' AGL/2939' MSL.
Trees beginning 140' from DER, 74' right of centerline, up to 100' AGL/3159' MSL.