


ILS or LOC RWY 8

LACONIA MUNI (LCI)

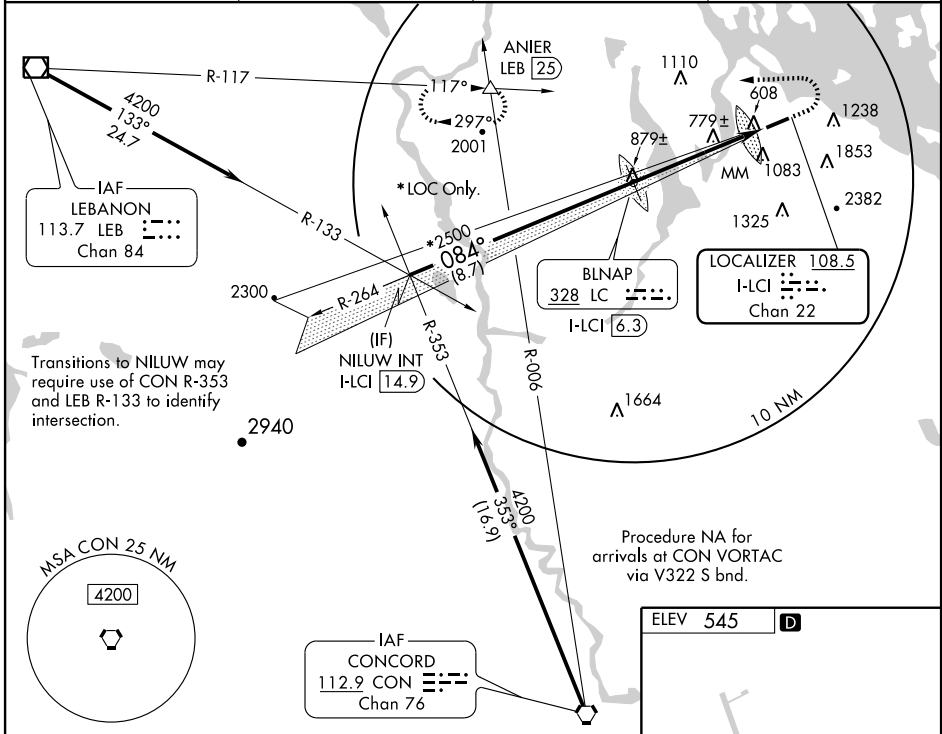
LOC/DME I-LCI 108.5 Chan 22	APP CRS 084°	Rwy Idg TDZE Apt Elev	5646 545 545
---	------------------------	-----------------------------	---

▼ If local altimeter setting not received, use Concord altimeter setting and increase all DAs/MDAs 80 feet. VDP NA when using Concord altimeter setting. For inoperative MALS, increase S-ILS 8 all Cats visibility to 1 mile.

MALS 

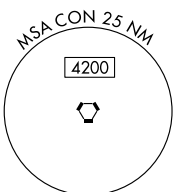
MISSED APPROACH: Climb to 1200, then climbing left turn to 5000 via heading 264° and LEB VOR/DME R-117 to ANIER Int/LEB 25 DME and hold, continue climb-in-hold to 5000.

AWOS-3 133.525	BOSTON APP CON 134.75 254.25	CLNC DEL 119.85	UNICOM 123.0 (CTAF) 0
--------------------------	--	---------------------------	---------------------------------

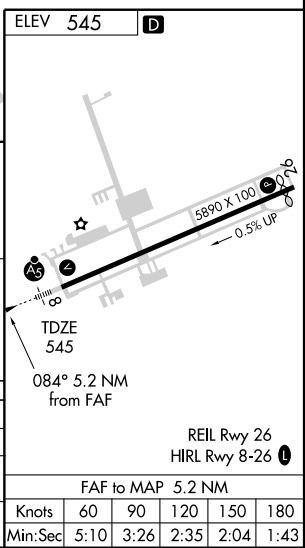
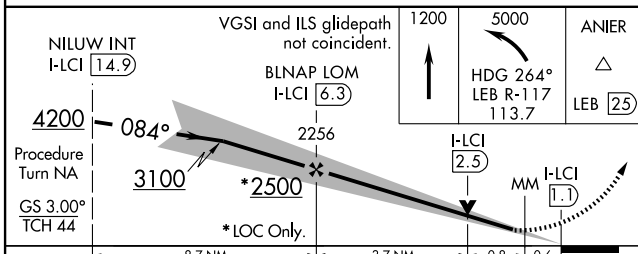


NE-1, 22 OCT 2009 to 19 NOV 2009

NE-1, 22 OCT 2009 to 19 NOV 2009



Procedure NA for arrivals at CON VORTAC via V322 S bnd.



CATEGORY	A	B	C	D
S-ILS 8	825-1/2		280 (300-1/2)	
S-LOC 8	1040-1/2	495 (500-1/2)	1040-3/4 495 (500-3/4)	1040-1 495 (500-1)
CIRCLING	1420-1 875 (900-1)	1600-1 1/2 1055 (1100-1 1/2)	1600-3 1055 (1100-3)	2160-3 1615 (1700-3)

FAF to MAP 5.2 NM					
Knots	60	90	120	150	180
Min:Sec	5:10	3:26	2:35	2:04	1:43