

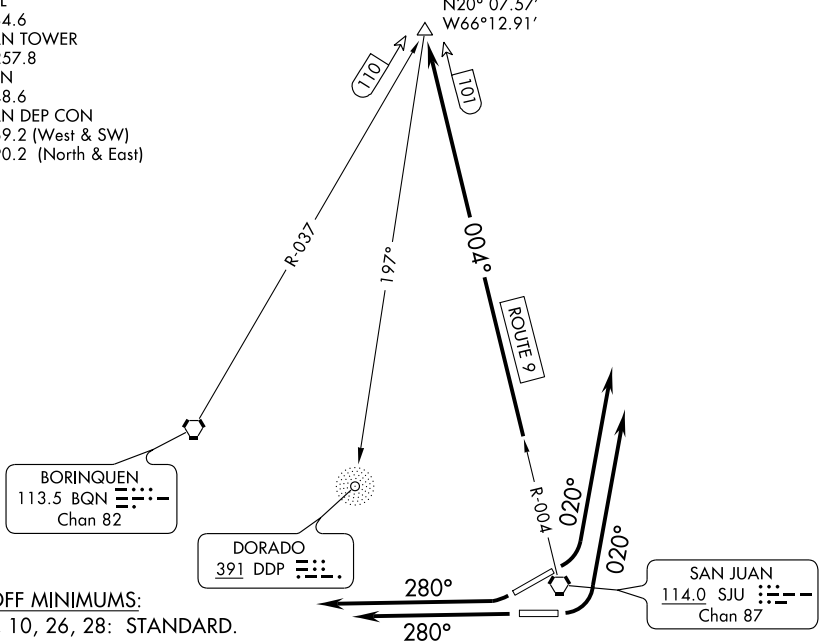
(VERMO5.VERMO) 09239

VERMO FIVE DEPARTURE

SAN JUAN/ LUIS MUNOZ MARIN INTL (SJU)(TJSJ)
SL-784 (FAA)
SAN JUAN, PUERTO RICO

ATIS 125.8
CLNC DEL
126.4 284.6
SAN JUAN TOWER
132.05 257.8
GND CON
121.9 348.6
SAN JUAN DEP CON
119.4 269.2 (West & SW)
120.9 290.2 (North & East)

VERMO
N20° 07.57'
W66° 12.91'



TAKE-OFF MINIMUMS:
RWY 8, 10, 26, 28: STANDARD.

TAKE-OFF OBSTACLE NOTES:

- Rwy 8: Trees beginning 21' from DER, left and right of centerline, up to 84' AGL/107' MSL.
- Rwy 10: Trees beginning 157' from DER, left and right of centerline, up to 54' AGL/61' MSL.
- Rwy 26: Bldg and trees beginning 8' from DER, 339' right of centerline, up to 138' AGL/154' MSL. Sign and bushes beginning 381' from DER, 374' left of centerline, up to 28' AGL/35' MSL.
- Rwy 28: Bush and trees beginning 159' from DER, 476' left of centerline, up to 61' AGL/71' MSL. Pole 438' from DER, 587' left of centerline, 31' AGL/38' MSL.

NOTE: Radar Required.

NOTE: Chart not to scale.

DEPARTURE ROUTE DESCRIPTION

TAKE-OFF RUNWAY 8: Climbing left turn heading 020° or as assigned by ATC, expect vectors to intercept SJU R-004 to VERMO INT. Thence. . . .

TAKE-OFF RUNWAY 10: Climbing left turn heading 020° or as assigned by ATC, expect vectors to intercept SJU R-004 to VERMO INT. Thence. . . .

TAKE-OFF RUNWAY 26: Climb heading 280° or as assigned by ATC, expect vectors to intercept SJU R-004 to VERMO INT. Thence. . . .

TAKE-OFF RUNWAY 28: Climb heading 280° or as assigned by ATC, expect vectors to intercept SJU R-004 to VERMO INT. Thence. . . .

. . . . Maintain 5000 unless assigned lower altitude. Expect clearance to FL280, or requested altitude if lower, ten minutes after departure.

VERMO FIVE DEPARTURE
(VERMO5.VERMO) 09239

SAN JUAN, PUERTO RICO
SAN JUAN/ LUIS MUNOZ MARIN INTL (SJU)(TJSJ)

SE-3, 22 OCT 2009 to 19 NOV 2009

SE-3, 22 OCT 2009 to 19 NOV 2009