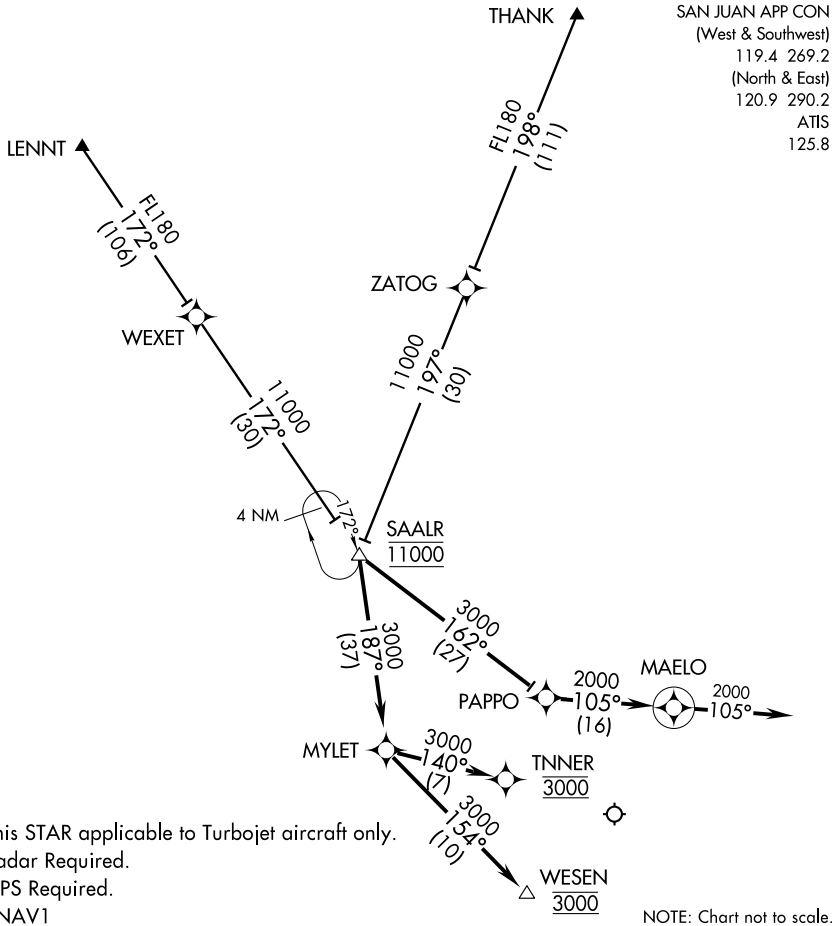


SAALR ONE ARRIVAL (RNAV)



SE-3, 22 OCT 2009 to 19 NOV 2009

SE-3, 22 OCT 2009 to 19 NOV 2009

ARRIVAL ROUTE DESCRIPTION

LENNT TRANSITION (LENNT.SAALR1):

THANK TRANSITION (THANK.SAALR1):

Landing East Rwy 08: From over SAALR WP via 187° track to MYLET WP, then via 154° track to WESEN WP, thence via assigned runway transition.

Landing East Rwy 10: From over SAALR WP via 187° track to MYLET WP, then via 140° track to TNNER WP, thence via assigned runway transition.

Landing West Rwy 26/28: From over SAALR WP via 162° track to PAPPO WP, then via 105° track to MAELO WP, then via 105° heading.

Expect radar vectors to runway transition.