

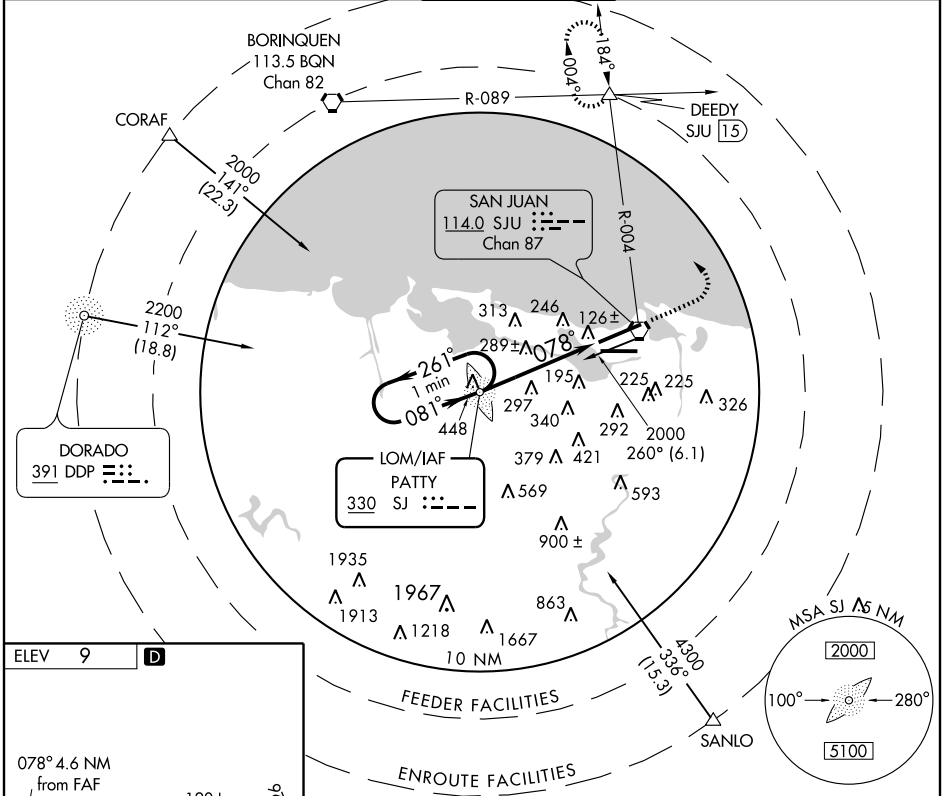
# NDB RWY 8

SAN JUAN/LUIS MUNOZ MARIN INTL (SJU)(TJSJ)

LOM SJ	APP CRS	Rwy Idg	<b>1000Z</b>
<b>330</b>	<b>078°</b>	TDZE	<b>9</b>
		Apt Elev	<b>9</b>

	MISSED APPROACH: Climb to 2000, then climbing left turn to 3000 via SJU VORTAC R-004 to DEEDY Int/SJU 15 DME and hold.		
	SAN JUAN APP CON <b>119.4 269.2</b> (WEST & SW) <b>120.9 290.2</b> (NORTH & EAST)		

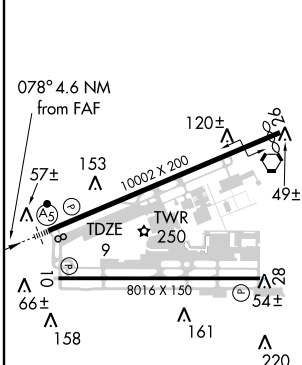
ATIS <b>125.8</b>	SAN JUAN TOWER <b>132.05 257.8</b>	GND CON <b>121.9 348.6</b>	CLNC DEL <b>126.4 284.6</b>
----------------------	---------------------------------------	-------------------------------	--------------------------------



SE-3, 22 OCT 2009 to 19 NOV 2009

SE-3, 22 OCT 2009 to 19 NOV 2009

ELEV 9	<b>D</b>
--------	----------



REIL Rwy 26  
 HIRL Rwlws 8-26 and 10-28  
 FAF to MAP 4.6 NM

Knots	60	90	120	150	180
Min:Sec	4:36	3:04	2:18	1:50	1:32

One Minute Holding Pattern

LOM

2000 ← 261°  
 081° →

1700

3.36° TCH 46

4.6 NM

VGSI and descent angles not coincident.

2000	3000	DEEDY
↑	SJU R-004	△
	114.0	

CATEGORY	A	B	C	D
S-8	600-¾ 591 (600-¾)		600-1 591 (600-1)	600-1½ 591 (600-1½)
CIRCLING	600-1 591 (600-1)		600-1½ 591 (600-1½)	600-2 591 (600-2)