

ATIS 125.8
 CLNC DEL 126.4 284.6
 GND CON 121.9 348.6
 SAN JUAN TOWER 132.05 257.8
 SAN JUAN DEP CON 119.4 269.2 (West & SW)
 120.9 290.2 (North & East)

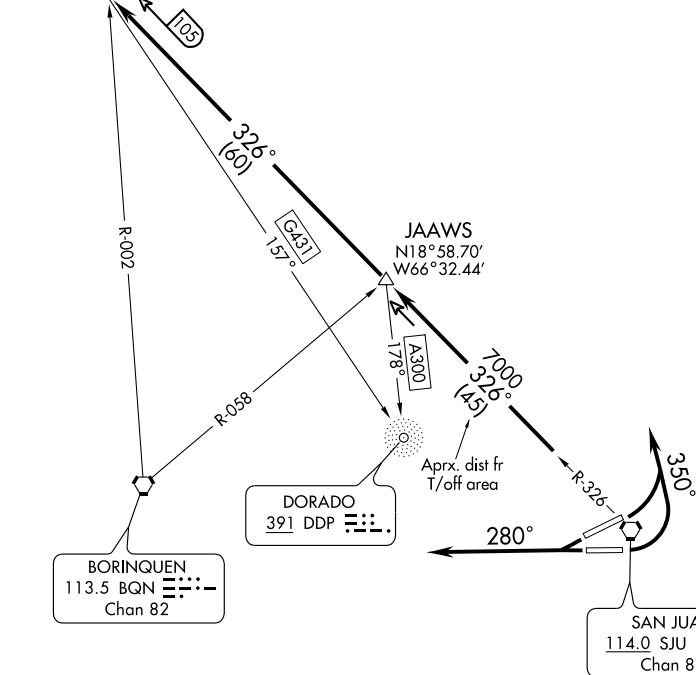
UTAHS
 N19°41.43'
 W67°17.21'

JAAWS
 N18°58.70'
 W66°32.44'

BORINQUEN
 113.5 BQN
 Chan 82

DORADO
 391 DDP

SAN JUAN
 114.0 SJU
 Chan 87



NOTE: DME or RNAV required.
 NOTE: Chart not to scale.

DEPARTURE ROUTE DESCRIPTION

TAKE-OFF RUNWAYS 8 and 10: Turn left heading 350° for radar vector to intercept SJU R-326 to UTAHS INT. Thence....
TAKE-OFF RUNWAYS 26 and 28: Fly heading 280° for radar vector to intercept SJU R-326 to UTAHS INT. Thence....
Maintain 5000' unless assigned lower altitude. Expect clearance to flight level 280 or requested altitude if lower ten minutes after departure.