

(CRSTL1.CRSTL) 08157

CRSTL ONE DEPARTURE

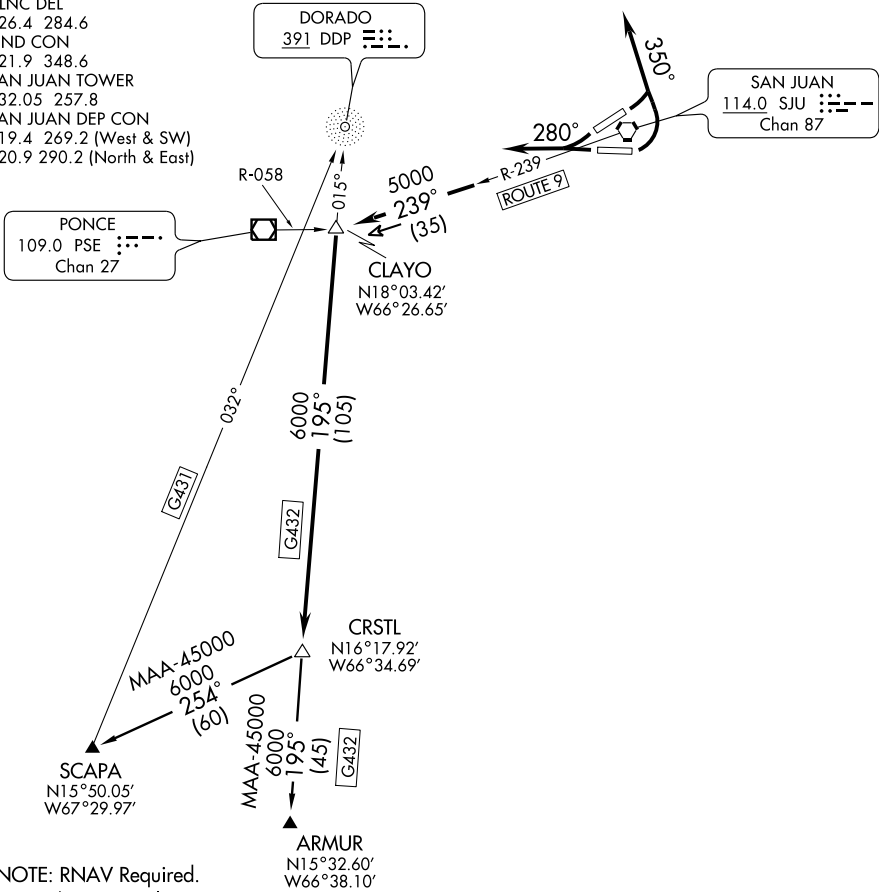
SAN JUAN/LUIS MUNOZ MARIN INTL (SJU)(TJSJ)
SL-784 (FAA) SAN JUAN, PUERTO RICO

ATIS 125.8
CLNC DEL
126.4 284.6
GND CON
121.9 348.6
SAN JUAN TOWER
132.05 257.8
SAN JUAN DEP CON
119.4 269.2 (West & SW)
120.9 290.2 (North & East)

PONCE
109.0 PSE :--
Chan 27

DORADO
391 DDP :--
:--

SAN JUAN
114.0 SJU :--
Chan 87



NOTE: RNAV Required.
NOTE: Chart not to scale.

DEPARTURE ROUTE DESCRIPTION

TAKE-OFF RUNWAYS 8 AND 10: Turn left heading 350° for vector to intercept SJU R-239 to CLAYO INT. Then via G432 to CRSTL INT. Thence....

TAKE-OFF RUNWAYS 26 AND 28: Fly heading 280° for vector to intercept SJU R-239 to CLAYO INT. Then via G432 to CRSTL INT. Thence....

....Maintain 5000' unless assigned lower altitude. Expect clearance to FL280 or requested altitude, if lower, ten minutes after departure.

ARMUR TRANSITION (CRSTL1.ARMUR): From over CRSTL INT via G432 (DDP bearing 015°) to ARMUR INT.

SCAPA TRANSITION (CRSTL1.SCAPA): From over CRSTL INT direct to SCAPA INT.

CRSTL ONE DEPARTURE
(CRSTL1.CRSTL) 08157

SAN JUAN, PUERTO RICO
SAN JUAN/LUIS MUNOZ MARIN INTL (SJU)(TJSJ)

SE-3, 22 OCT 2009 to 19 NOV 2009

SE-3, 22 OCT 2009 to 19 NOV 2009