

BEANO ONE ARRIVAL (RNAV)

SAN JUAN APP CON
(West & Southwest)
119.4 269.2
(North & East)
120.9 290.2
ATIS
125.8

ARRIVAL ROUTE DESCRIPTION

ELMUC TRANSITION (ELMUC.BEANO1):

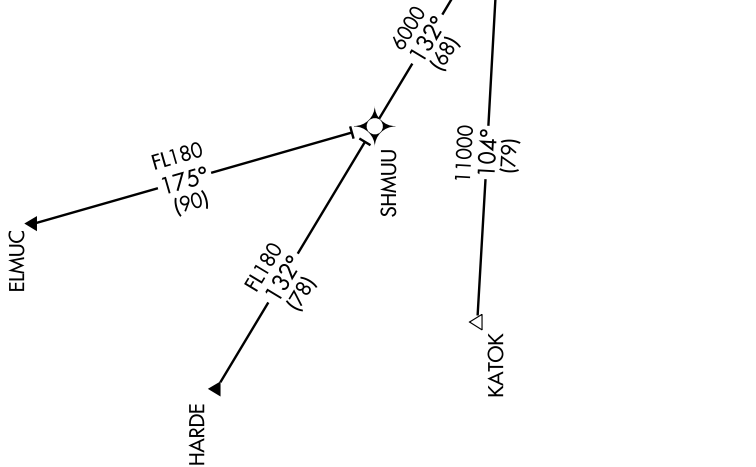
HARDE TRANSITION (HARDE.BEANO1):

KATOK TRANSITION (KATOK.BEANO1):

Landing East Rwy 08: From over BEANO WP via 140° track to MYLET WP, then via 154° track to WESEN WP, thence via assigned runway transition.

Landing East Rwy 10: From over BEANO WP via 140° track to MYLET WP, then via 140° track to TINNER WP, thence via assigned runway transition.

Landing West Rwy 26/28: From over BEANO WP via 105° track to MAELO WP, then via 105° heading. Expect radar vectors.



NOTE: This STAR applicable to Turbojet aircraft only.
 NOTE: Radar Required.
 NOTE: GPS Required.
 NOTE: RNAV 1.

NOTE: Chart not to scale.

SE-3, 22 OCT 2009 to 19 NOV 2009

SE-3, 22 OCT 2009 to 19 NOV 2009