

ITHACA, NEW YORK

AL-779 (FAA)

VOR/DME ITH 111.8 Chan 55	APP CRS 329°	Rwy Idg TDZE 1099 Apt Elev 1099
---	------------------------	---

VOR or GPS RWY 32

ITHACA TOMPKINS RGNL (ITH)

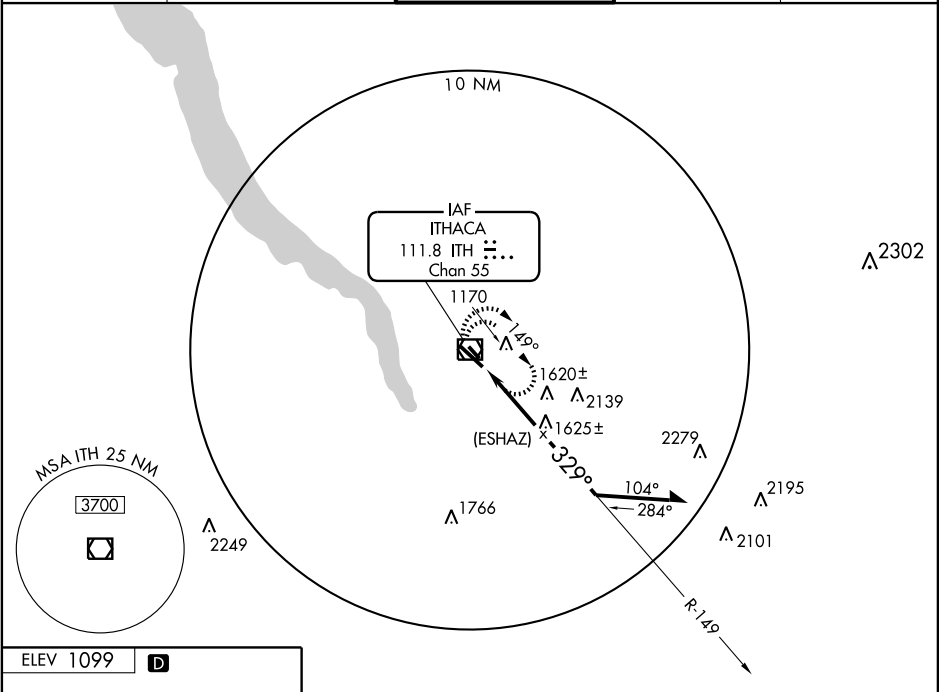


When control tower closed, except for operators with weather reporting service, use Elmira altimeter setting. Inoperative table does not apply to Cats A and B.



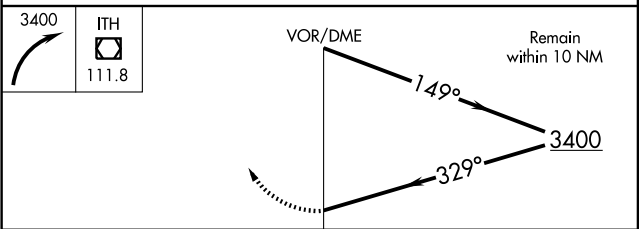
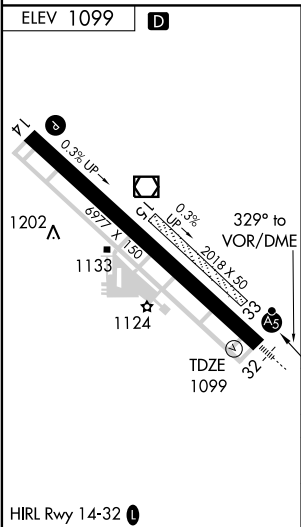
MISSED APPROACH: Climbing right turn to 3400 in ITH VOR/DME holding pattern.

ATIS 125.175	ELMIRA APP CON * 124.3 257.8	ITHACA TOWER * 119.6 (CTAF) 0	GND CON 121.8	UNICOM 122.95
------------------------	--	---	-------------------------	-------------------------



NE-2, 22 OCT 2009 to 19 NOV 2009

NE-2, 22 OCT 2009 to 19 NOV 2009



CATEGORY	A	B	C	D
S-32	2500/60 1401 (1500-1¼)	2500-1½ 1401 (1500-1½)	2500-2½	1401 (1500-2½)
CIRCLING	2500-1¼ 1401 (1500-1¼)	2500-1½ 1401 (1500-1½)	2500-3	1401 (1500-3)
ELMIRA ALTIMETER SETTING MINIMUMS				
S-32	2580/60 1481 (1500-1¼)	2580-1½ 1481 (1500-1½)	2580-2½	1481 (1500-2½)
CIRCLING	2580-1¼ 1481 (1500-1¼)	2580-1½ 1481 (1500-1½)	2580-3	1481 (1500-3)

ITHACA, NEW YORK
Amdt 1A 09295

42°29'N - 76°28'W

ITHACA TOMPKINS RGNL (ITH) VOR or GPS RWY 32