

ITHACA, NEW YORK

AL-779 (FAA)

VOR or GPS RWY 14

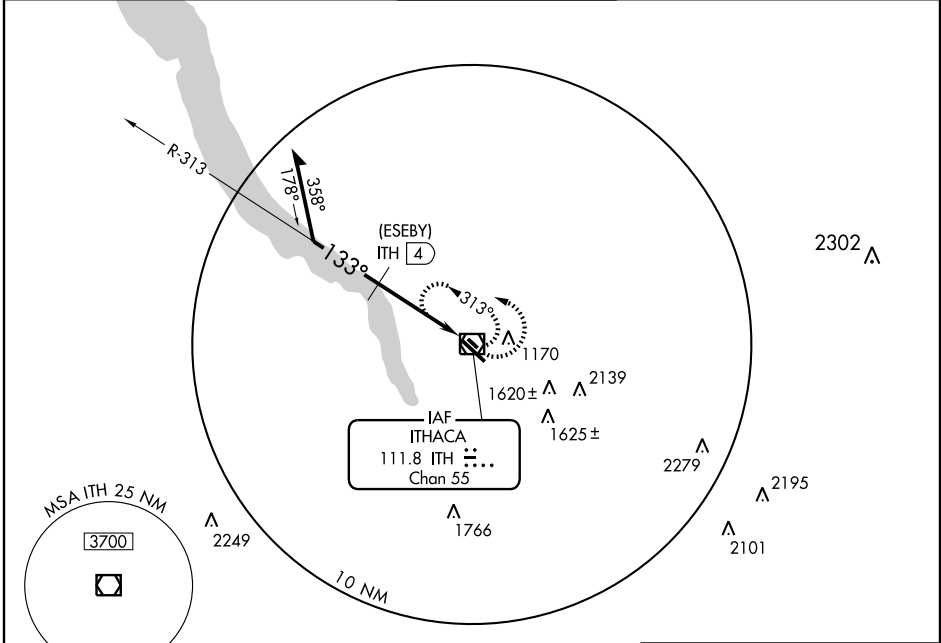
ITHACA TOMPKINS RGNL (ITH)

VOR/DME ITH 111.8 Chan 55	APP CRS 133°	Rwy Idg 6601 TDZE 1087 Apt Elev 1099
---	------------------------	---

⚠ When control tower closed, except for operators with approved weather reporting service, use Elmira altimeter setting and increase all MDAs 100 feet and visibility Cat C and D ¼ mile.

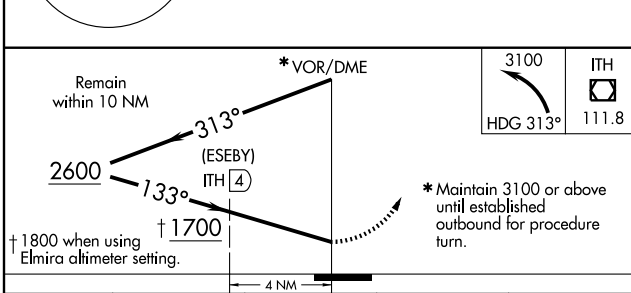
MISSED APPROACH: Climbing left turn to 3100 via heading 313° then direct ITH VOR/DME and hold.

ATIS 125.175	ELMIRA APP CON * 124.3 257.8	ITHACA TOWER * 119.6 (CTAF) 0	GND CON 121.8	UNICOM 122.95
------------------------	--	--	-------------------------	-------------------------

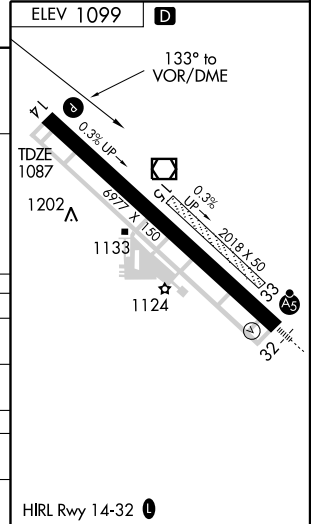


NE-2, 22 OCT 2009 to 19 NOV 2009

NE-2, 22 OCT 2009 to 19 NOV 2009



CATEGORY	A	B	C	D
S-14	1700-1	613 (700-1)	1700-1¼ 613 (700-1¼)	1700-2 613 (700-2)
CIRCLING	1700-1	601 (700-1)	1700-1¼ 601 (700-1¼)	1820-2¼ 721 (800-2¼)
DME MINIMUMS				
S-14	1460-1 373 (400-1)		1460-1¼ 373 (400-1¼)	
CIRCLING	1520-1 421 (500-1)	1560-1 461 (500-1)	1600-1½ 501 (600-1½)	1820-2¼ 721 (800-2¼)



ITHACA, NEW YORK
Amdt 13 09295

42°29'N - 76°28'W

ITHACA TOMPKINS RGNL (ITH)

VOR or GPS RWY 14