

CLINTON, OKLAHOMA

HI-VOR/DME or TACAN RWY 17R

VORTAC BFV 110.0 Chan 37	APCH CRS 174°	Rwy Idg 13,503 TDZE 1922 Arpt Elev 1922
--	-------------------------	--

JAL-778 [USAF]

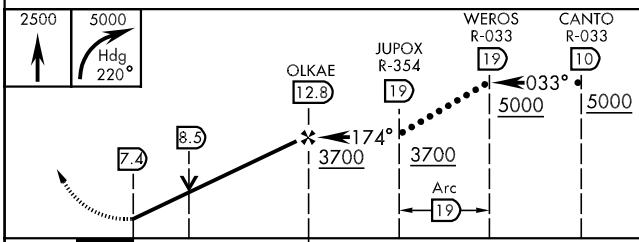
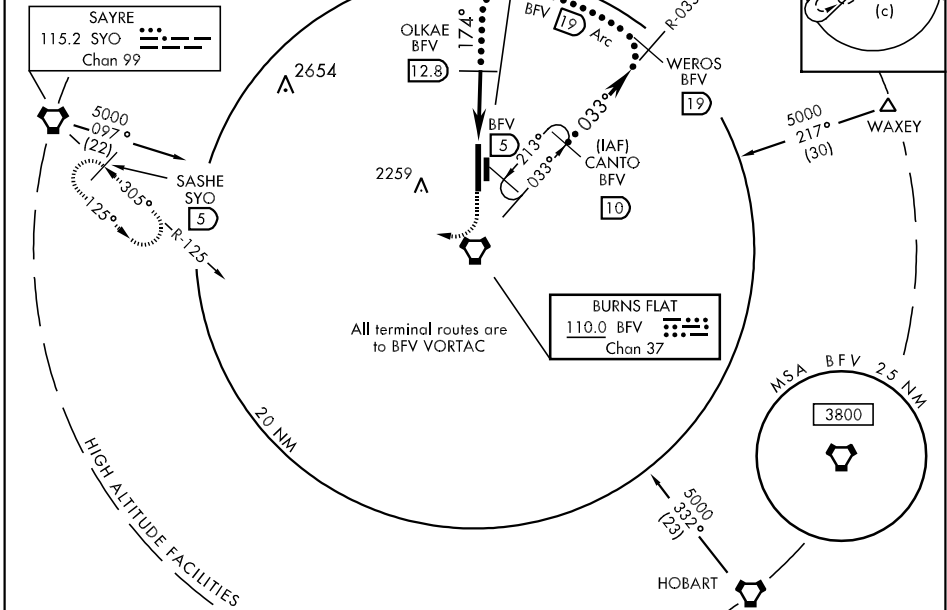
CLINTON-SHERMAN (KCSM)

Circling E of Rwy 17R-35L not authorized.

 MISSED APPROACH: Climb to 2500 then climbing right turn to 5000 via heading 220° and SYO VORTAC R-125 to SASHE and hold.

FORT WORTH CENTER 128.4 269.375	CLINTON-SHERMAN TOWER * 119.60 256.9	GND CON 121.7 239.0
---	--	-------------------------------

† When local altimeter setting not received, use HOBART Municipal altimeter setting and increase all MDAs 120 ft. Increase S-17R CAT C vis ¼ mile, and CAT DE vis ½ mile. Increase Circling CAT D vis ¼ mile, and CAT E vis ½ mile. VDP NA when using HOBART Municipal altimeter setting.



CATEGORY	C	D	E
S-17R †	2340-1¼	418 (500-1¼)	2340-1½ 418 (500-1½)
CIRCLING †	2400-1½ 478 (500-1½)	2480-2 558 (600-2)	2620-2½ 698 (700-2½)

CLINTON, OKLAHOMA
Amdt 2 09295

35° 20' N - 99° 12' W

CLINTON-SHERMAN (KCSM)

HI-VOR/DME or TACAN RWY 17R

SC-1, 22 OCT 2009 to 19 NOV 2009

SC-1, 22 OCT 2009 to 19 NOV 2009