

CLINTON, OKLAHOMA

AL-778 (FAA)

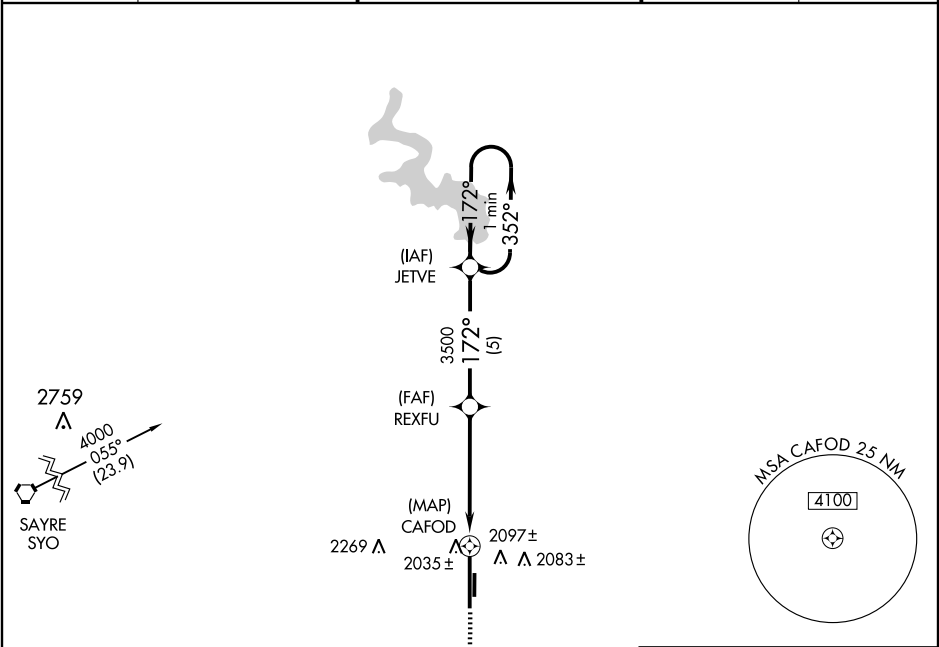
GPS RWY 17R

CLINTON-SHERMAN (CSM)

APP CRS	Rwy Idg	13503
172°	TDZE	1922
	Apt Elev	1922

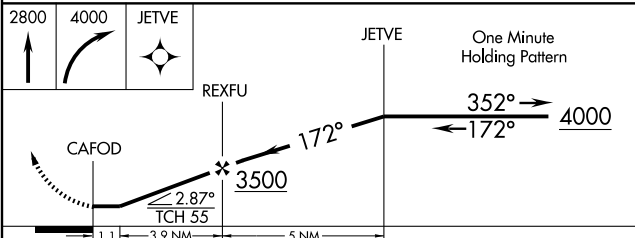
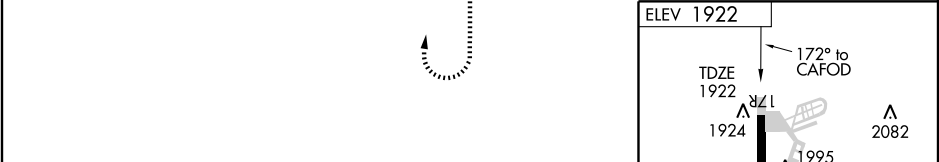
⚠ Circling not authorized east of Rwy 17R-35L.
⚠ NA MISSED APPROACH: Climb to 2800 then climbing right turn to 4000 direct JETVE and hold.

ASOS 135.225	FORT WORTH CENTER 128.4 269.375	CLINTON-SHERMAN TOWER * 119.6 (CTAF) 256.9	GND CON 121.7 239.0	UNICOM 122.95
------------------------	---	--	-------------------------------	-------------------------

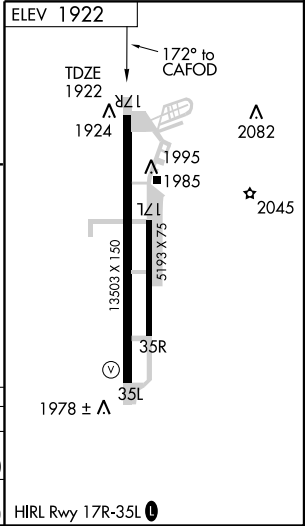


SC-1, 22 OCT 2009 to 19 NOV 2009

SC-1, 22 OCT 2009 to 19 NOV 2009



CATEGORY	A	B	C	D	E
S-17R	2340-1 418 (500-1)		2340-1¼ 418 (500-1¼)		2340-1½ 418 (500-1½)
CIRCLING	2400-1 478 (500-1)		2400-1½ 478 (500-1½)	2480-2 558 (600-2)	2620-2½ 698 (700-2½)



CLINTON, OKLAHOMA
 Orig-B 08325

35° 20' N-99° 12' W

CLINTON-SHERMAN (CSM)

GPS RWY 17R