

VORTAC LNY 117.7 Chan 124	APP CRS 098°	Rwy Ldg TDZE N/A N/A Apt Elev 1308
-----------------------------------------------	------------------------	------------------------------------------------------------------

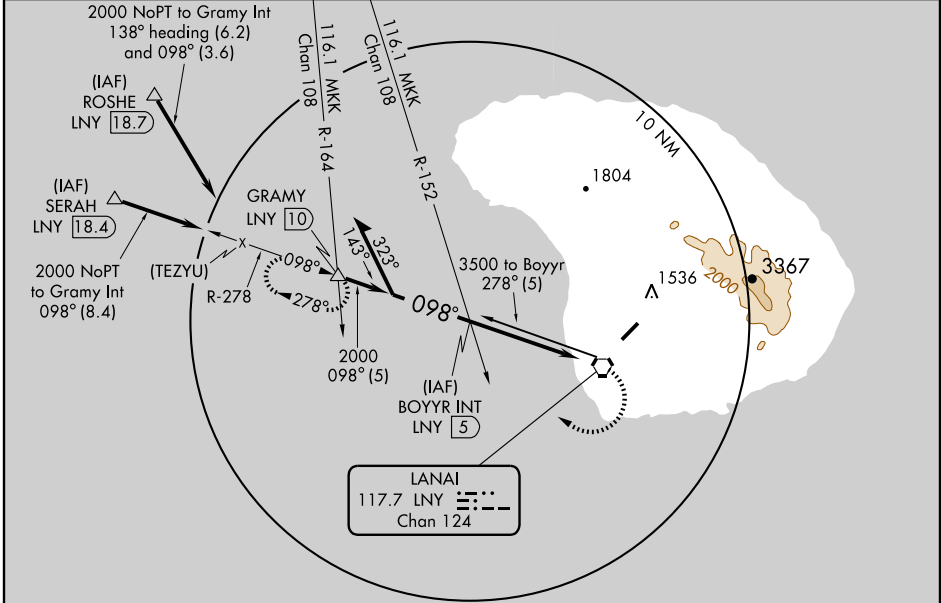
VOR or TACAN or GPS-A

LANAI CITY/LANAI (LNY)(PHNY)

⚠ When local altimeter not received, procedure not authorized, except for operators with approved weather reporting service.

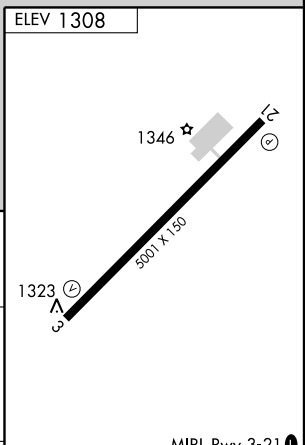
⚠ MISSED APPROACH: Climbing right turn to 2000 via LNY R-278 to GRAMY Int/LNY 10 DME and hold.

ASOS 118.375	HCF APPROACH 119.3 307.1	CTAF 122.9
------------------------	------------------------------------	----------------------



PAC, 22 OCT 2009 to 17 DEC 2009

PAC, 22 OCT 2009 to 17 DEC 2009



CATEGORY	A	B	C	D	Knots	60	90	120	150	180
CIRCLING	1840-1½ 532 (600-1½)	1880-1½ 572 (600-1½)	1900-1½ 592 (600-1½)	1900-2 592 (600-2)	Min:Sec					

LANAI CITY, HAWAII Amdt 8 07074	LANAI CITY/LANAI (LNY)(PHNY) VOR or TACAN or GPS-A
------------------------------------	-------------------------------------------------------

20° 47'N - 156° 57'W