

LIHUE, HAWAII

AL-776 (FAA)

# RNAV (RNP) Z RWY 35

LIHUE (LIH)(PHLI)

APP CRS <b>349°</b>	Rwy ldg <b>6500</b>
	TDZE <b>96</b>
	Apt Elev <b>153</b>

**GPS REQUIRED.** For inoperative MALSR, increase RNP 0.30 visibility to 1¾. For uncompensated Baro-VNAV systems, procedure NA below 14°C (57°F) or above 48°C (119°F).

**MALSR**  
A5

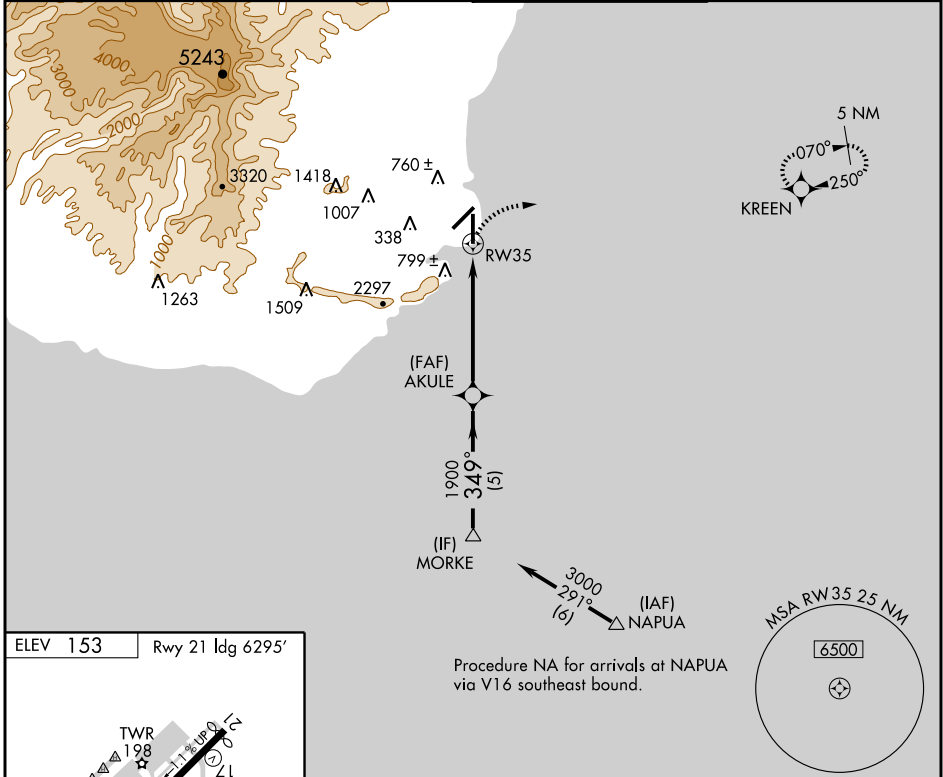
**MISSED APPROACH:** Climbing right turn to 3000 direct KREEN and hold.

ATIS  
**127.2**

HCF APPROACH  
**126.5 269.4**

LIHUE TOWER\*  
**118.9 (CTAF) 0 263.1**

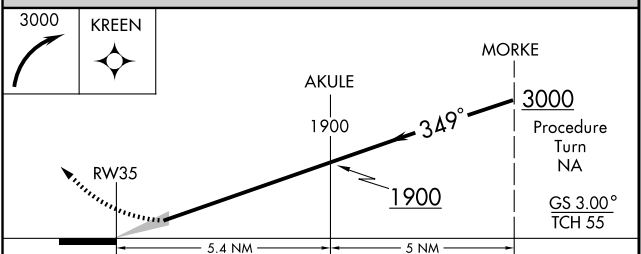
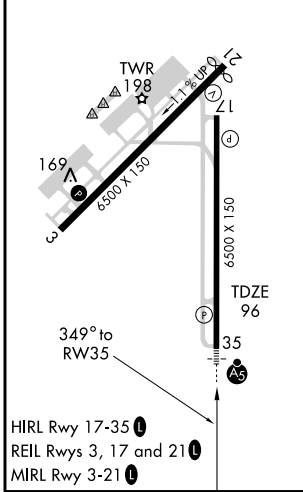
GND CON  
**121.9**



PAC, 22 OCT 2009 to 17 DEC 2009

PAC, 22 OCT 2009 to 17 DEC 2009

ELEV 153 Rwy 21 ldg 6295'



CATEGORY	A	B	C	D
RNP 0.30 DA	599-1¼ 503 (500-1¼)			

## SPECIAL AIRCRAFT & AIRCREW AUTHORIZATION REQUIRED

LIHUE, HAWAII  
Orig 07186

21° 59'N-159° 20'W

# RNAV (RNP) Z RWY 35