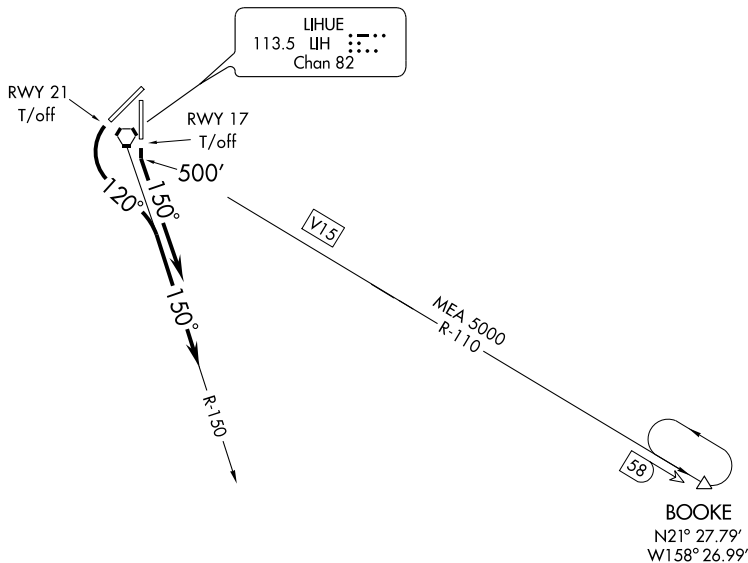


RICHE TWO DEPARTURE

ATIS
127.2
GND CON
121.9
LIHUE TOWER★
118.9 (CTAF) 263.1
HCF APPROACH
126.5 269.4



LIHUE
113.5 LIH
Chan 82

PAC, 22 OCT 2009 to 17 DEC 2009

PAC, 22 OCT 2009 to 17 DEC 2009

NOTE: DME Required.

NOTE: Honolulu CERAP radio call is "Honolulu Center".

NOTE: Terrain heights to 2297' occur within 4.5 NM southwest of the airport.

NOTE: Chart not to scale.

DEPARTURE ROUTE DESCRIPTION

TAKE-OFF RUNWAY 17: Climb runway heading to 500 feet, then climbing left turn to heading 150°, expect radar vectors to intercept LIH R-110 to BOOKE DME fix. MEA 5000.

TAKE-OFF RUNWAY 21: Immediate climbing left turn to heading 120 until crossing LIH R-150, thence fly heading 150°, expect radar vectors to intercept LIH R-110 to BOOKE DME fix. MEA 5000.

LOST COMMUNICATIONS: If not in contact with Honolulu CERAP one minute after departure, maintain SID heading until 10 NM southeast of LIH VORTAC, then intercept LIH R-110 to BOOKE DME fix. MEA 5000.

RICHE TWO DEPARTURE