


(DIANE1.LIH) 07186


SL-776 (FAA)

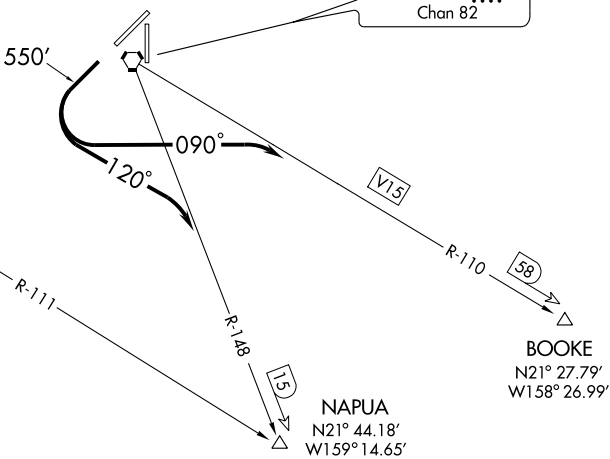
LIHUE (LIH)(PHLI)  
LIHUE, HAWAII

# DIANE ONE DEPARTURE

ATIS  
127.2  
GND CON  
121.9  
LIHUE TOWER★  
118.9 (CTAF) 263.1  
HCF APPROACH  
126.5 269.4

SOUTH KAUAI  
115.4 SOK   
Chan 101

LIHUE  
113.5 LIH   
Chan 82



PAC, 22 OCT 2009 to 17 DEC 2009

PAC, 22 OCT 2009 to 17 DEC 2009

TAKE-OFF MINIMUMS: Rwy 21, 2400-3

NOTE: Honolulu CERAP radio call is "Honolulu Center".

NOTE: Ridgeline 1.5 NM south to 6 NM southwest, 900' to 2400' MSL.

NOTE: Terrain heights to 2297' MSL occur within 4.2 NM southwest of the airport.

NOTE: This Departure not authorized for Rwy 3, Rwy 17, Rwy 35.

NOTE: Chart not to scale.



## DEPARTURE ROUTE DESCRIPTION

### TAKE-OFF RUNWAY 21:

To V15: Climb runway heading to 550 then climbing left turn, heading 090°, to intercept LIH R-110 (V15), maintain 5000, direct BOOKE INT or as assigned.

To LIH R-148: Climb runway heading to 550, then climbing left turn, heading 120°, to intercept LIH R-148, maintain 3000, direct NAPUA INT or as assigned.

# DIANE ONE DEPARTURE

(DIANE1.LIH) 07186

LIHUE, HAWAII  
LIHUE (LIH)(PHLI)