

# ILS RWY 1


MARQUETTE/ SAWYER INTL (SAW)

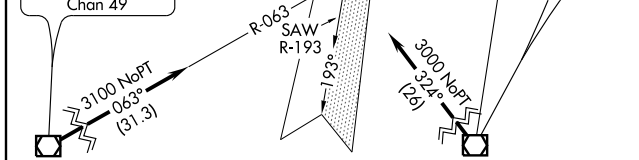
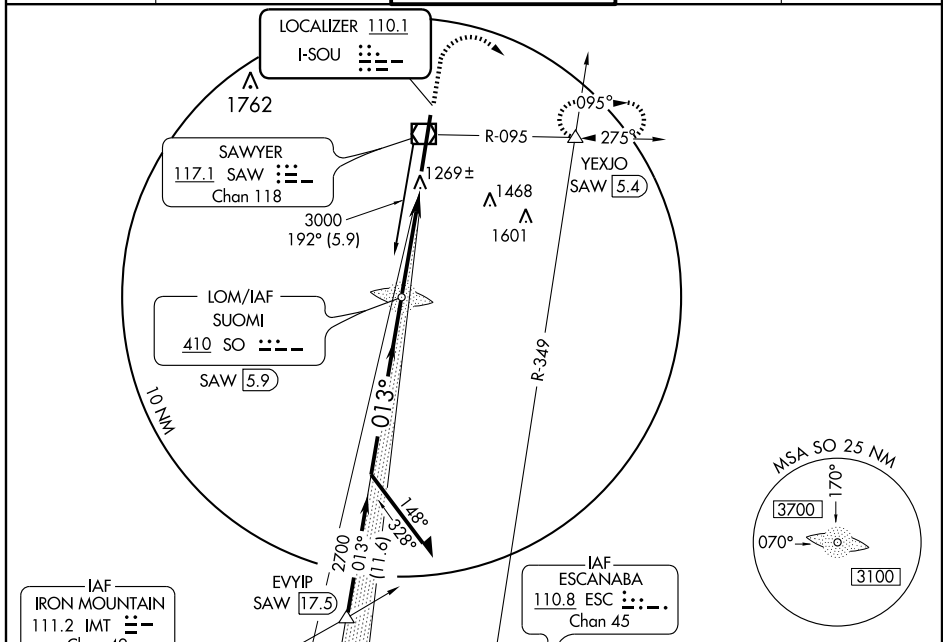
LOC I-SOU <b>110.1</b>	APP CRS <b>013°</b>	Rwy Idg <b>12366</b> TDZE <b>1180</b> Apt Elev <b>1221</b>
---------------------------	------------------------	--



**A** For inoperative MALS/R increase S-LOC 1 CAT D visibility to 1.

**MALS/R** 

**MISSED APPROACH:** Climb to 1600, then climbing right turn to 3000 via heading 101° and SAW R-095 to YEXJO Int and hold.

AWOS-3 <b>118.375</b>	MINNEAPOLIS CENTER <b>119.1 290.2</b>	SAWYER TOWER ★ <b>119.975 (CTAF)</b> 	GND CON <b>121.65</b>	UNICOM <b>122.7</b>
--------------------------	--	---	--------------------------	------------------------



ELEV 1221	<b>D</b>
HIRL Rwy 1-19	
REIL Rwy 19	

61

0.4% DOWN

12366 X 150

TDZE 1180

013° 4.6 NM from FAF

FAF to MAP 4.6 NM					
Knots	60	90	120	150	180
Min:Sec	4:36	3:04	2:18	1:50	1:32

CATEGORY	A	B	C	D
S-ILS 1	1380-½ 200 (200-½)			
S-LOC 1	1520-½ 340 (300-½)		1520-¾ 340 (300-¾)	
CIRCLING	1720-1	499 (500-1)	1720-1½ 499 (500-1½)	1780-2 559 (600-2)

EC-1, 22 OCT 2009 to 19 NOV 2009

EC-1, 22 OCT 2009 to 19 NOV 2009