

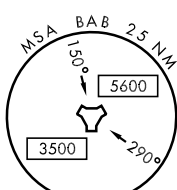
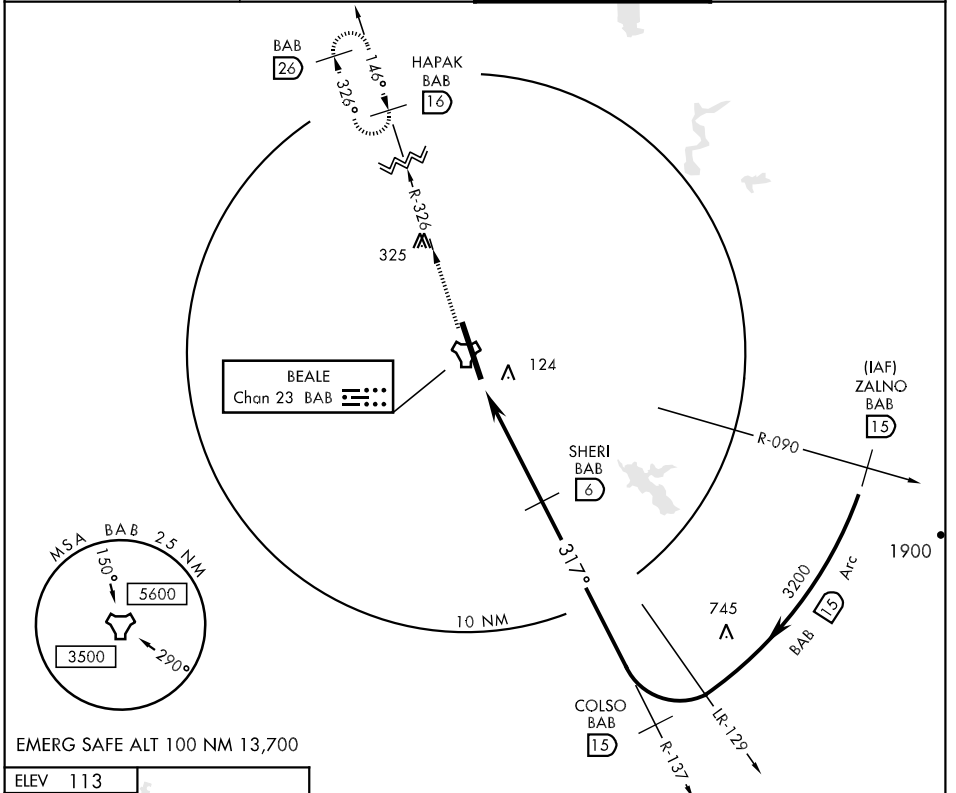
TACAN BAB Chan 23	APCH CRS 317°	Rwy Ldg 12,000 TDZE 105 Arprt Elev 113	AL-771 [USAF]	BEALE AFB (KBAB)
----------------------	------------------	--	---------------	------------------

▼ * When ALS inop, increase CAT AB RVR to 50 and vis to 1 mile, CAT C RVR to 60 and vis to 1½ miles, CAT D vis to 1½ miles, CAT E vis to 1¾ miles.
 ** Circling not authorized E of Rwy 15-33.

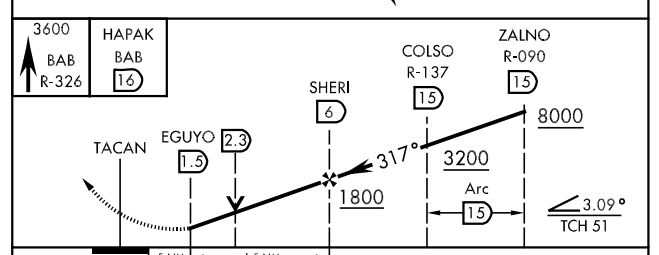
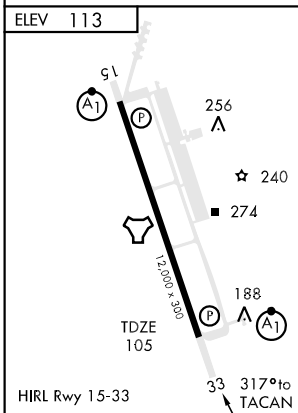


MISSED APPROACH: Climb to 3600 via BAB TACAN R-326 to HAPAK and hold.

ATIS ★ 273.5	NORCAL APP CON 125.4 259.1	BEALE TOWER ★ 119.4 276.15	GND CON 121.6 257.75
-----------------	-------------------------------	-------------------------------	-------------------------



EMERG SAFE ALT 100 NM 13,700



CATEGORY	A	B	C	D	E
S-33 *	580/24	475 (500-½)	580/40 475 (500-¾)	580/50 475 (500-1)	580/60 475 (500-1½)
CIRCLING **	600-1	487 (500-1)	600-1½ 487 (500-1½)	680-2	567 (600-2)

SW-2, 22 OCT 2009 to 19 NOV 2009

SW-2, 22 OCT 2009 to 19 NOV 2009