

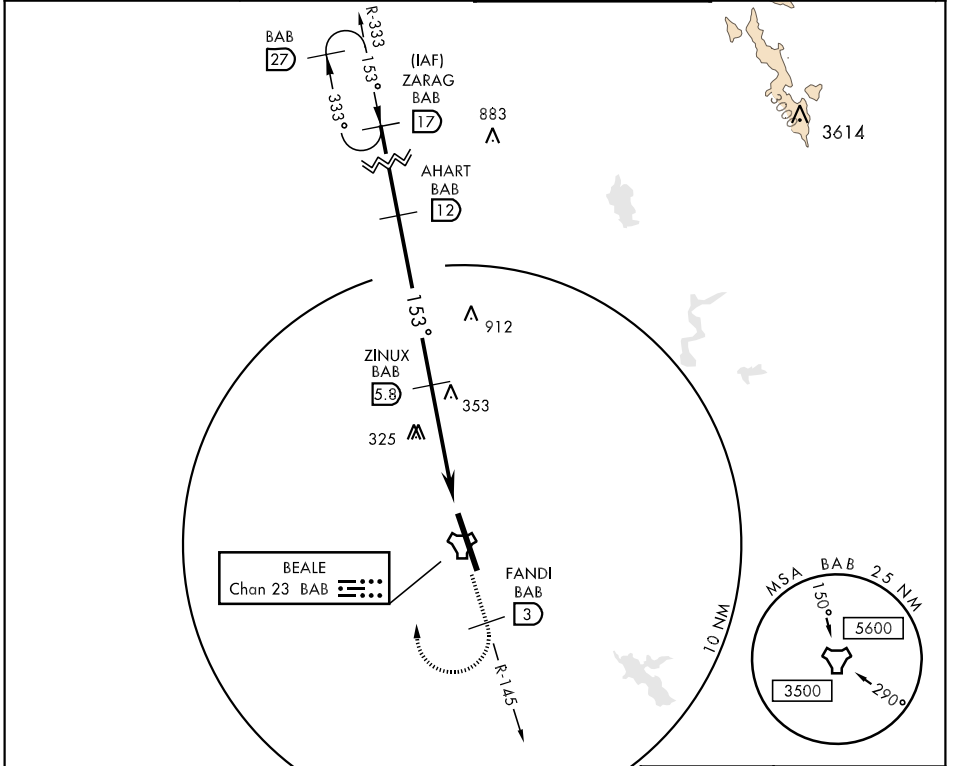
TACAN BAB Chan 23	APCH CRS 153°	Rwy Idg 12,000 TDZE 113 Arpt Elev 113	AL-771 [USAF]	BEALE AFB (KBAB)
-----------------------------	-------------------------	--	---------------	------------------

▼ * When ALS inop, increase CAT AB RVR to 50 and vis to 1 mile, CAT C vis to 1½ miles, CAT DE vis to 1¾ miles.
 ** Circling not authorized E of Rwy 15-33.



MISSED APPROACH: Climb to 4400 via BAB TACAN R-145, at FANDI, turn right, intercept BAB R-333 to ZARAG and hold, continue climb in hold to 4400.

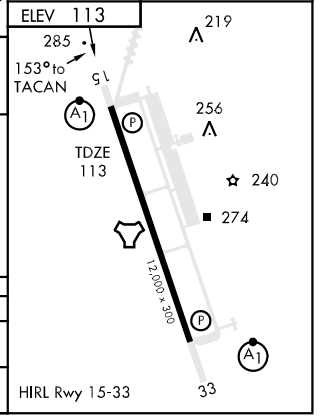
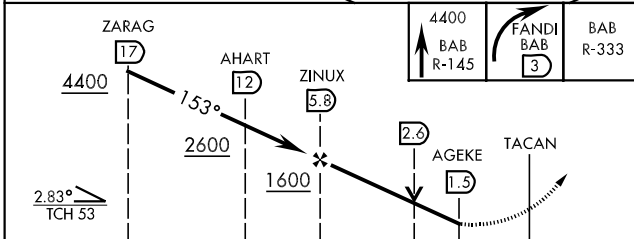
ATIS ★ 273.5	NORCAL APP CON 125.4 259.1	BEALE TOWER ★ 119.4 276.15	GND CON 121.6 257.75
------------------------	--------------------------------------	--------------------------------------	--------------------------------



SW-2, 22 OCT 2009 to 19 NOV 2009

SW-2, 22 OCT 2009 to 19 NOV 2009

EMERG SAFE ALT 100 NM 13,700



CATEGORY	A	B	C	D	E
S-15 *	640/24 527 (600-½)		640/50 527 (600-1)	640/60 527 (600-1¼)	
CIRCLING **	640-1 527 (600-1)		640-1½ 527 (600-1½)	680-2 567 (600-2)	