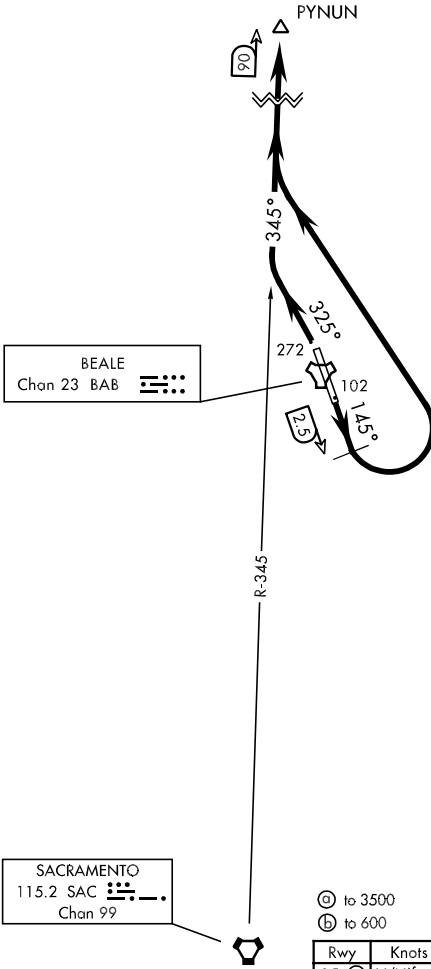


SHL-771 [USAF]

ATIS ★ 273.5
GND CON
121.6 257.75
BEALE TOWER ★
119.4 276.15
NORCAL DEP CON
125.4 259.1



- Ⓐ to 3500
- Ⓑ to 600

Minimum Climb Rate

Rwy	Knots	60	120	180	240	300	360
15 Ⓐ	V/V(fpm)	260	520	780	1040	1300	1560
33 Ⓑ	V/V(fpm)	260	520	780	1040	1300	1560



DEPARTURE ROUTE DESCRIPTION

TAKE-OFF RWY 15: Fly heading 145° until BAB TACAN 2.5 DME, turn left intercept SAC VORTAC R-345 to PYNUN. Then via assigned route.

TAKE-OFF RWY 33: Fly heading 325° intercept SAC VORTAC R-345 to PYNUN. Then via assigned route.

SW-2, 22 OCT 2009 to 19 NOV 2009

SW-2, 22 OCT 2009 to 19 NOV 2009