

MARYSVILLE, CALIFORNIA

ILS or LOC/DME RWY 33

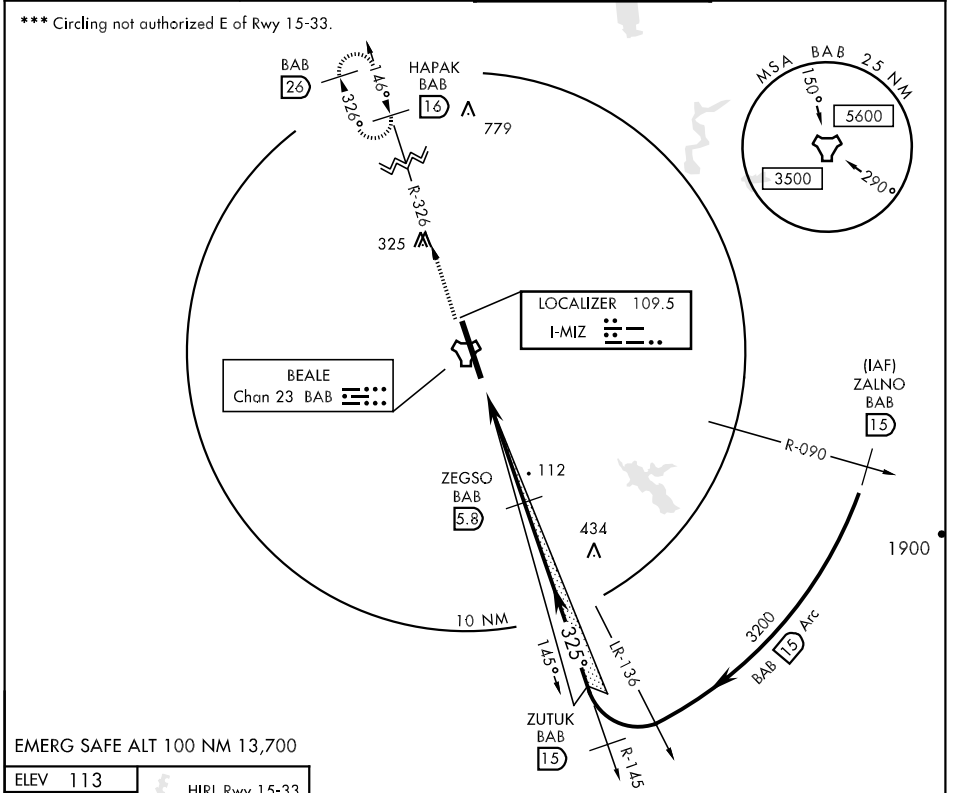
LOC I-MIZ 109.5	APCH CRS 325°	Rwy Idg TDZE Arpt Elev 12,000 105 113	AL-771 [USAF]	BEALE AFB (KBAB)
---------------------------	-------------------------	---	---------------	------------------

▼ * When ALS inop, increase CAT ABCDE RVR to 40 and vis to ¾ mile.
 ** When ALS inop, increase CAT AB RVR to 50 and vis to 1 mile, CAT CD RVR to 60 and vis to 1½ miles, CAT E vis to 1½ miles.

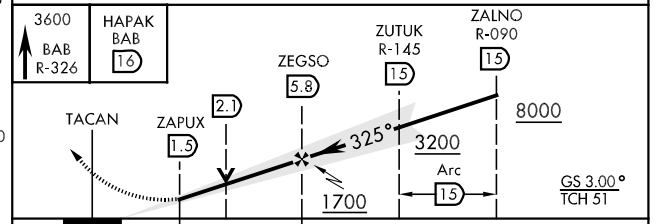
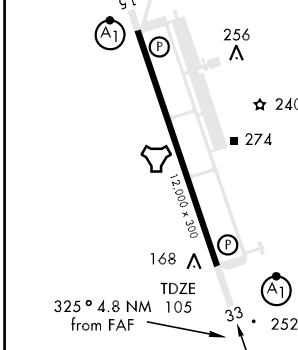


MISSED APPROACH: Climb to 3600 via BAB TACAN R-326 to HAPAK and hold.

ATIS ★ 273.5	NORCAL APP CON 125.4 259.1	BEALE TOWER ★ 119.4 276.15	GND CON 121.6 257.75
------------------------	--------------------------------------	--------------------------------------	--------------------------------



EMERG SAFE ALT 100 NM 13,700



CATEGORY	A	B	C	D	E
S-ILS 33 *	305/24		200	(200-½)	
S-LOC 33 **	520/24	415 (500-½)	520/40	415 (500-¾)	520/50 415 (500-1)
CIRCLING ***	600-1	487 (500-1)	600-1½ 487(500-1½)	680-2	567 (600-2)

MARYSVILLE, CALIFORNIA 39°08'N-121°26'W BEALE AFB (KBAB)

Orig 09155

ILS or LOC/DME RWY 33

SW-2, 22 OCT 2009 to 19 NOV 2009

SW-2, 22 OCT 2009 to 19 NOV 2009