

LOC I-BAB <b>109.5</b>	APCH CRS <b>145°</b>	Rwy ldg <b>12,000</b> TDZE <b>113</b> Arpt Elev <b>113</b>	AL-771 [USAF]	BEALE AFB (KBAB)
---------------------------	-------------------------	--	---------------	------------------

▽ \* When ALS inop, increase all CAT RVR to 40 and vis to 3/4 mile.  
▽ \*\* When ALS inop, increase CAT AB RVR to 50 and vis to 1 mile, CAT CD vis to 1 1/2 miles, CAT E vis to 1 3/4 miles.



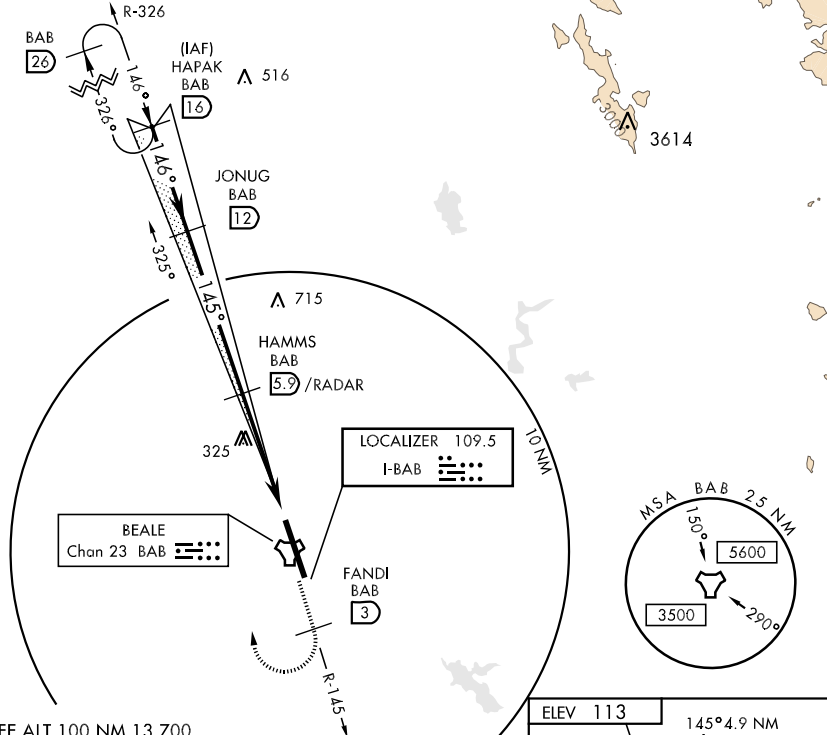
**MISSED APPROACH:** Climb to 3600 via BAB TACAN R-145, at FANDI turn right, intercept BAB R-326 to HAPAK and hold.

ATIS * <b>273.5</b>	NORCAL APP CON <b>125.4 259.1</b>	BEALE TOWER * <b>119.4 276.15</b>	GND CON <b>121.6 257.75</b>
------------------------	--------------------------------------	--------------------------------------	--------------------------------

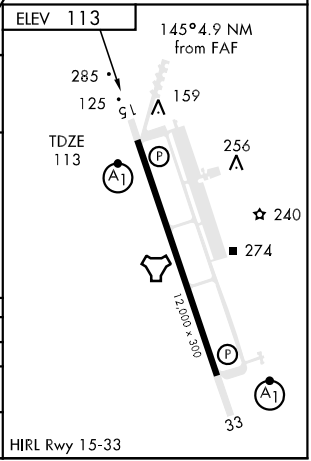
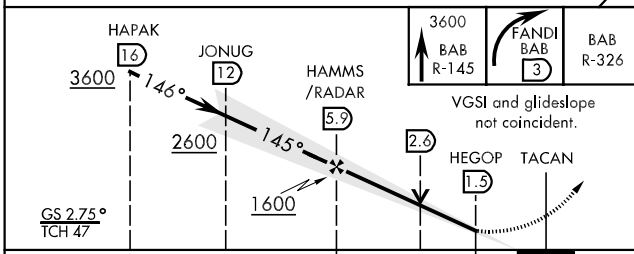
\*\*\* Circling not authorized E of Rwy 15-33.

SW-2, 22 OCT 2009 to 19 NOV 2009

SW-2, 22 OCT 2009 to 19 NOV 2009



EMERG SAFE ALT 100 NM 13,700



CATEGORY	A	B	C	D	E
S-ILS 15 *	313/24		200	(200-1/2)	
S-LOC 15 **	620/24	507 (600-1/2)	620/50	507 (600-1)	620/60 507 (600-1 1/4)
CIRCLING ***	620-1	507 (600-1)	620-1 1/2 507(600-1 1/2)	680-2	567 (600-2)

HIRL Rwy 15-33