

MARYSVILLE, CALIFORNIA

HI-TACAN RWY 33

TACAN BAB Chan 23	APCH CRS 317°	Rwy ldg 12,000 TDZE 105 Arprt Elev 113
----------------------	------------------	--

JAL-771 [USAF]

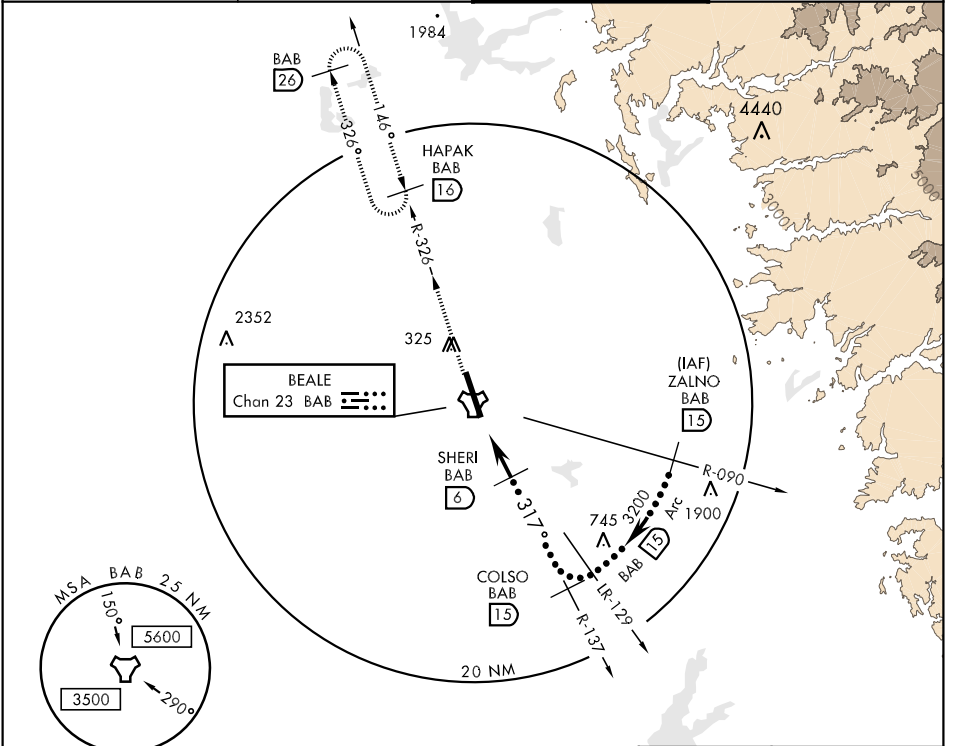
BEALE AFB (KBAB)

▼ * When ALS inop, increase CAT C RVR to 60 and vis to 1½ miles, CAT D vis to 1½ miles, CAT E vis to 1¾ miles.
 ** Circling not authorized E of Rwy 15-33.



MISSED APPROACH: Climb to 3600 via BAB TACAN R-326 to HAPAK and hold.

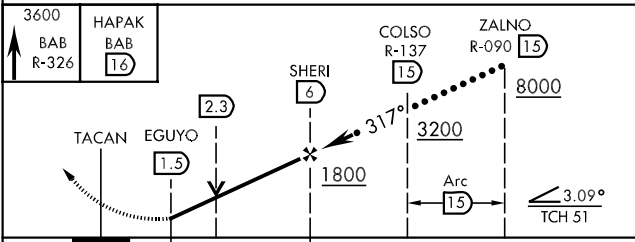
ATIS ★ 273.5	NORCAL APP CON 125.4 259.1	BEALE TOWER ★ 119.4 276.15	GND CON 121.6 257.75
-----------------	-------------------------------	-------------------------------	-------------------------



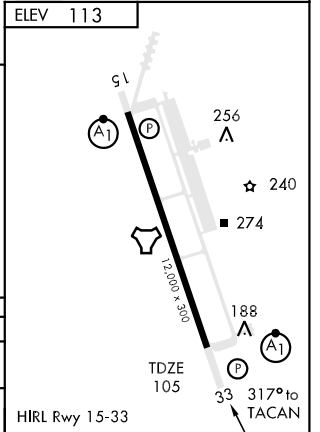
SW-2, 22 OCT 2009 to 19 NOV 2009

SW-2, 22 OCT 2009 to 19 NOV 2009

EMERG SAFE ALT 100 NM 13,700



CATEGORY	C	D	E
S-33 *	580/40 475 (500-¾)	580/50 475 (500-1)	580/60 475 (500-1¼)
CIRCLING **	600-1½ 487 (500-1½)	680-2 567	(600-2)



MARYSVILLE, CALIFORNIA
Orig 09155

39°08'N-121°26'W

BEALE AFB (KBAB)

HI-TACAN RWY 33