

TACAN BAB Chan 23	APCH CRS 153°	Rwy Idg 12,000 TDZE 113 Arpt Elev 113
----------------------	------------------	---

JAL-771 [USAF]

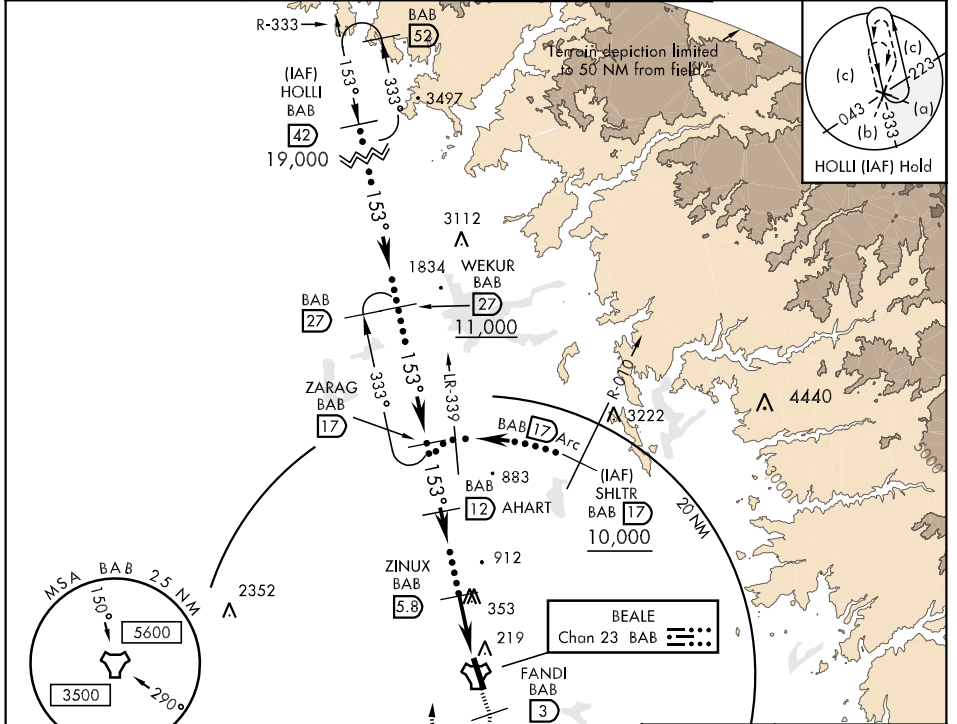
BEALE AFB (KBAB)

▼ * When ALS inop, increase CAT C vis to 1½ miles, CAT DE vis to 1¾ miles.
** Circling not authorized E of Rwy 15-33.



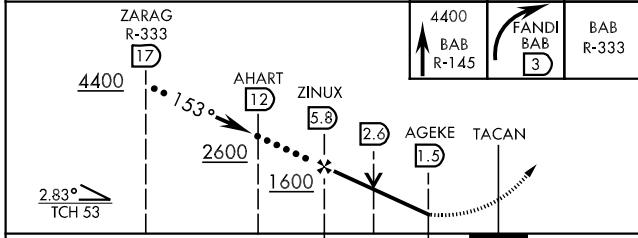
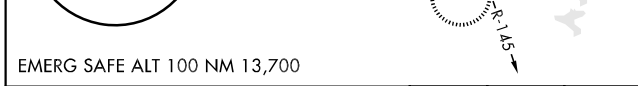
MISSED APPROACH: Climb to 4400 via BAB TACAN R-145, at FANDI, turn right, intercept BAB R-333 to ZARAG and hold, continue climb in hold to 4400.

ATIS ★ 273.5	NORCAL APP CON 125.4 259.1	BEALE TOWER ★ 119.4 276.15	GND CON 121.6 257.75
-----------------	-------------------------------	-------------------------------	-------------------------



SW-2, 22 OCT 2009 to 19 NOV 2009

SW-2, 22 OCT 2009 to 19 NOV 2009



CATEGORY	C	D	E
S-15 *	640/50 527 (600-1)	640/60	527 (600-1¼)
CIRCLING **	640-1½ 527 (600-1½)	680-2	567 (600-2)

