

HI-ILS or LOC/DME RWY 33

LOC I-MIZ 109.5	APCH CRS 325°	Rwy Idg 12,000 TDZE 105 Arpt Elev 113
---------------------------	-------------------------	---

JAL-771 [USAF]

BEALE AFB (KBAB)

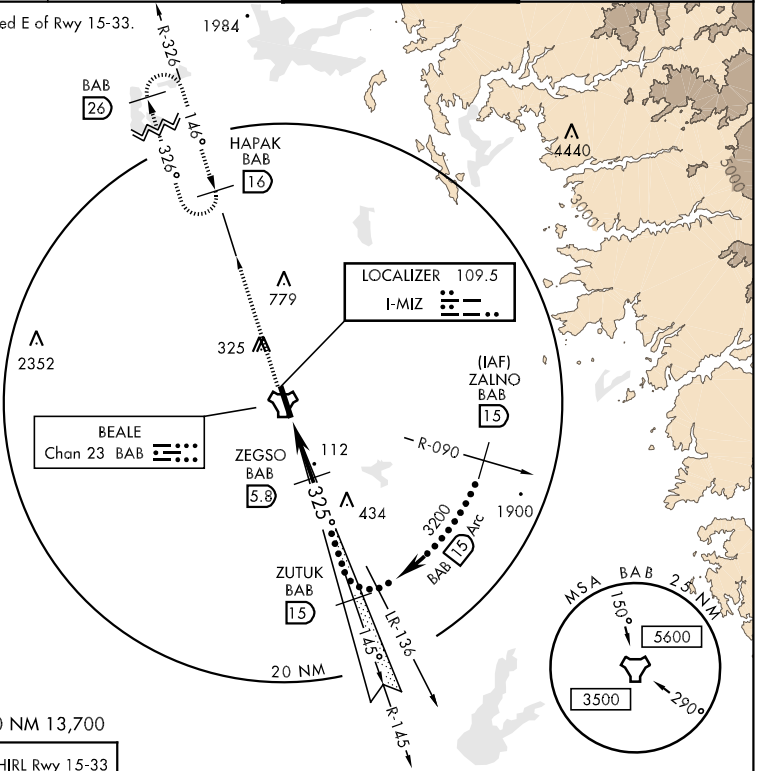
▽ * When ALS inop, increase CAT CDE RVR to 40 and vis to ¾ mile.
A1 ** When ALS inop, increase CAT CD RVR to 60 and vis to 1¼ miles, CAT E vis to 1½ miles.



MISSED APPROACH: Climb to 3600 via BAB TACAN R-326 to HAPAK and hold.

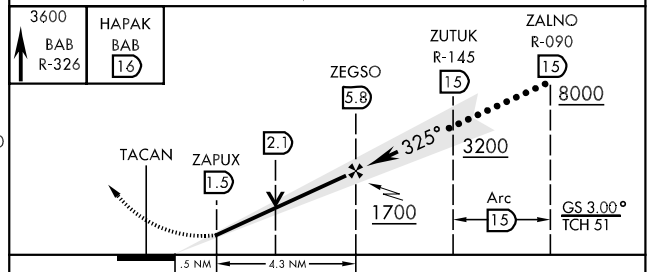
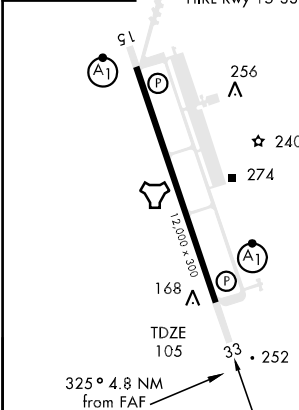
ATIS ★ 273.5	NORCAL APP CON 125.4 259.1	BEALE TOWER ★ 119.4 276.15	GND CON 121.6 257.75
------------------------	--------------------------------------	--------------------------------------	--------------------------------

*** Circling not authorized E of Rwy 15-33.



EMERG SAFE ALT 100 NM 13,700

ELEV 113 HIRL Rwy 15-33



CATEGORY	C		D		E	
S-ILS 33 *	305/24		200		(200-½)	
S-LOC 33 **	520/40	415	(500-¾)		520/50	(500-1)
CIRCLING ***	600-1½ 487 (500-1½)		680-2		567	(600-2)

HI-ILS or LOC/DME RWY 33

SW-2, 22 OCT 2009 to 19 NOV 2009

SW-2, 22 OCT 2009 to 19 NOV 2009