

LOC I-BAB 109.5	APCH CRS 145°	Rwy ldg 12,000 TDZE 113 Arpt Elev 113
---------------------------	-------------------------	--

JAL-771 [USAF]

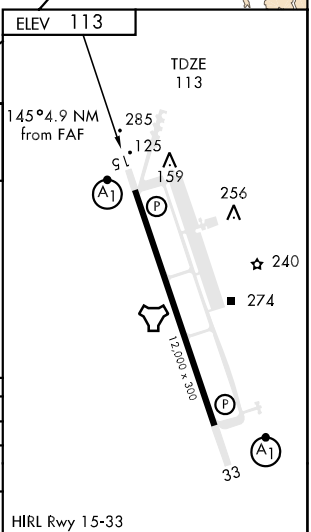
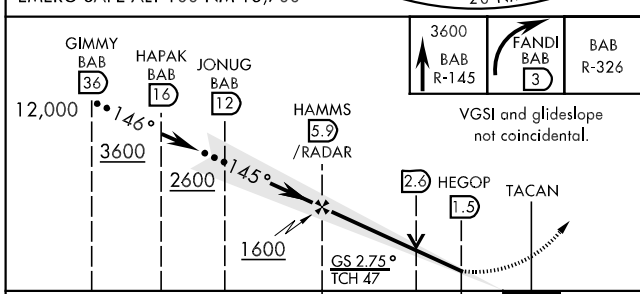
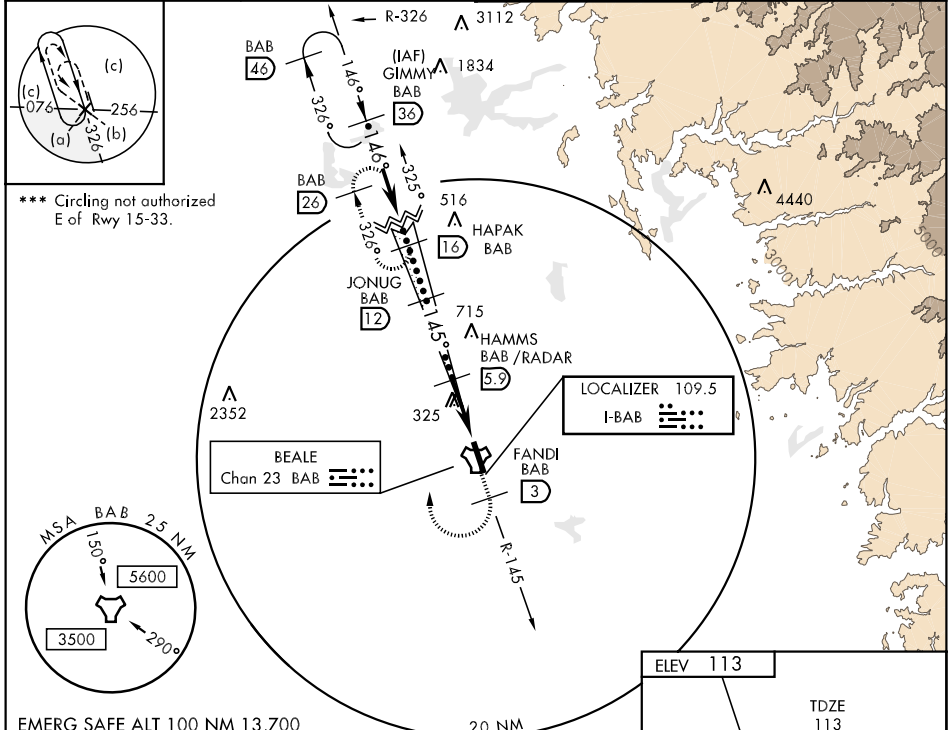
BEALE AFB (KBAB)

* When ALS inop, increase CAT CDE RVR to 40 and vis to 3/4 mile.
 ** When ALS inop, increase CAT CD vis 1 1/2 miles, CAT E vis to 1 3/4 miles.

 ALSF-1

 MISSED APPROACH: Climb to 3600 via BAB TACAN R-145, at FANDI, turn right, intercept BAB R-326 to HAPAK and hold.

ATIS ★ 273.5	NORCAL APP CON 125.4 259.1	BEALE TOWER ★ 119.4 276.15	GND CON 121.6 257.75
------------------------	--------------------------------------	--------------------------------------	--------------------------------



CATEGORY	C	D	E
S-ILS 15 *	313/24	200 (200-1/2)	
S-LOC 15 **	620/50 507	(600-1)	620/60 507 (600-1 1/4)
CIRCLING ***	620-1 1/2 507 (600-1 1/2)	680-2	567 (600-2)

HIRL Rwy 15-33

SW-2, 22 OCT 2009 to 19 NOV 2009

SW-2, 22 OCT 2009 to 19 NOV 2009