

TACAN VBG Chan 59(Y)	APCH CRS 127°	Rwy Idg 15,000 TDZE 267 Arpt Elev 369
--------------------------------	-------------------------	--

AL-770 [USAF]

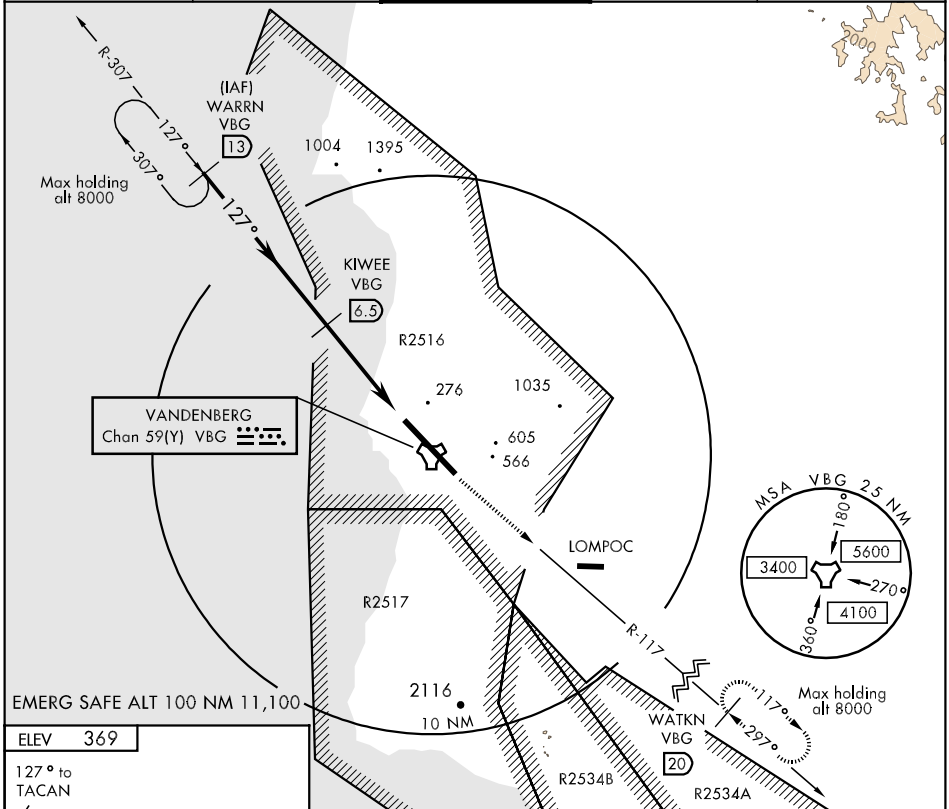
VANDENBERG AFB (KVBG)

* When ALS inop, increase CAT AB RVR to 50 and vis to 1 mile, CAT C RVR to 60 and vis to 1¼ miles, CAT DE increase vis to 1½ miles.

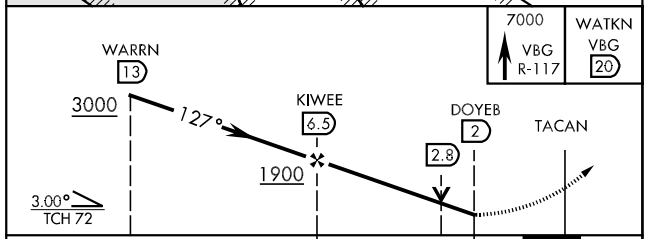
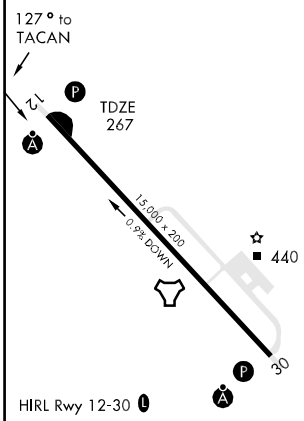


MISSED APPROACH: Climb out VBG TACAN R-117 until 20 DME (WATKN) and hold. Continue climb in hold maintain 7000.

ATIS 133.125 257.975	SANTA BARBARA APP/DEF CON 124.15 327.8	VANDENBERG TOWER ★ 124.95 (CTAF) 326.2	GND CON 121.75 275.8	CLNC DEL 121.75 275.8
--------------------------------	---	---	--------------------------------	---------------------------------



ELEV 369



CATEGORY	A	B	C	D	E
S-12 *	740/24 473 (400-½)		740/40 473 (400-¾)	740/50 473 (400-1)	740/60 473 (400-1¼)
CIRCLING	980-1 611 (700-1)	1000-1 631 (700-1)	1020-1¼ 651 (700-1¾)	1040-2¼ 671 (700-2½)	1540-3 1171 (1200-3)

SW-3, 22 OCT 2009 to 19 NOV 2009

SW-3, 22 OCT 2009 to 19 NOV 2009