

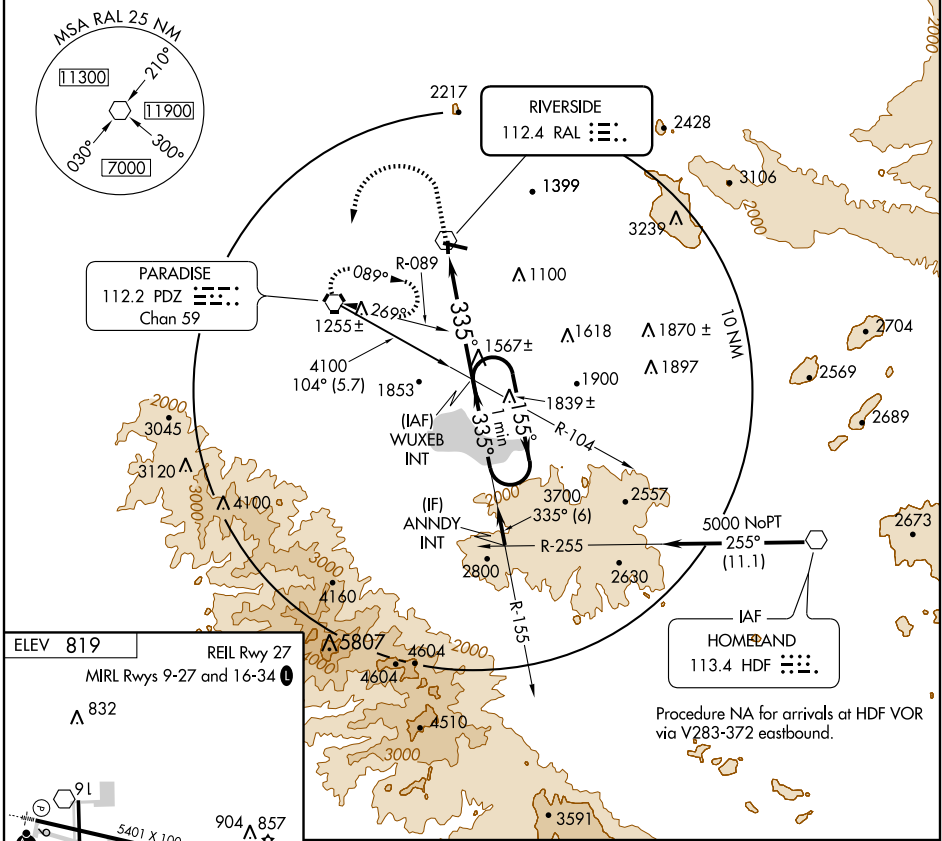
VOR-B
RIVERSIDE MUNI (RAL)

VOR RAL 112.4	APP CRS 335°	Rwy Idg TDZE Apt Elev	N/A N/A 819
-------------------------	------------------------	-----------------------------	--

▼ When VGSI inoperative, circling Rwy 34 NA at night.
▲ Circling NA for Cat D north of Rwy 9-27.
 When local altimeter setting not received, use Chino altimeter setting and increase all MDA 60 feet.

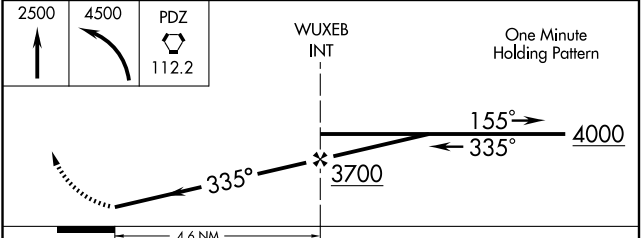
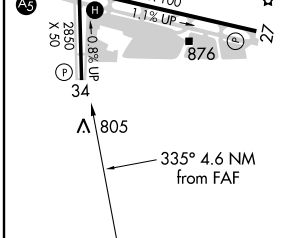
MISSED APPROACH: Climb to 2500 then climbing left turn to 4500 direct PDZ VORTAC and hold, continue climb-in-hold to 4500.

ATIS 128.8	SOCAL APP CON 135.4 377.125	RIVERSIDE TOWER ★ 121.0 (CTAF) 257.8	GND CON 121.7	UNICOM 122.95
----------------------	---------------------------------------	---	-------------------------	-------------------------



SW-3, 22 OCT 2009 to 19 NOV 2009

SW-3, 22 OCT 2009 to 19 NOV 2009



FAF to MAP 4.6 NM					
Knots	60	90	120	150	180
Min:Sec	4:36	3:04	2:18	1:50	1:32
CATEGORY	A	B	C	D	
CIRCLING	2000-1¼ 1181 (1200-1¼)	2000-1½ 1181 (1200-1½)	2000-3	1181 (1200-3)	