

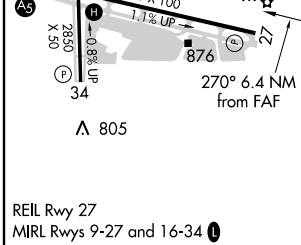
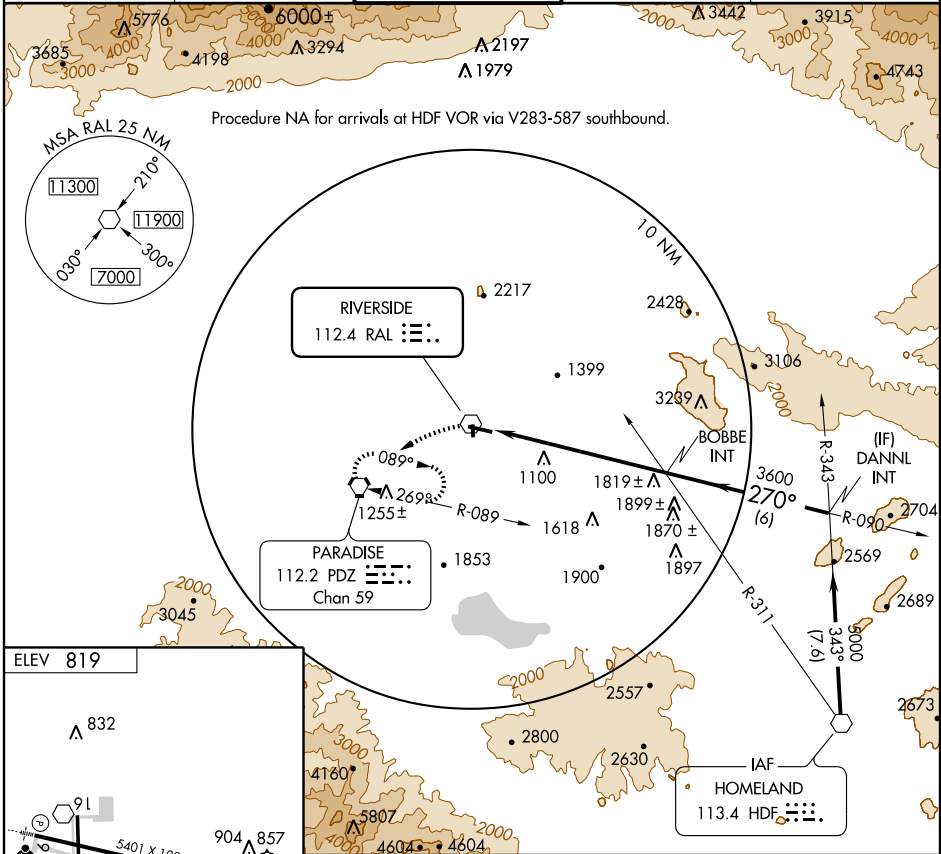
VOR-A
RIVERSIDE MUNI (RAL)

VOR RAL 112.4	APP CRS 270°	Rwy Idg TDZE Apt Elev	N/A N/A 819
-------------------------	------------------------	-----------------------------	--------------------------

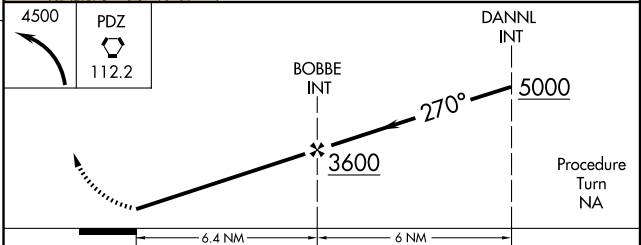
V When VGS1 inoperative, circling Rwy 34 NA at night.
A When local altimeter setting not received, use Chino altimeter setting and increase all MDAs 60 feet.

MISSED APPROACH: Climbing left turn to 4500 direct PDZ VORTAC and hold, continue climb-in-hold to 4500.

ATIS 128.8	SOCAL APP CON 135.4 377.125	RIVERSIDE TOWER ★ 121.0 (CTAF) 0 257.8	GND CON 121.7	UNICOM 122.95
----------------------	---------------------------------------	---	-------------------------	-------------------------



FAF to MAP 6.4 NM					
Knots	60	90	120	150	180
Min:Sec	6:24	4:16	3:12	2:34	2:08



CATEGORY	A	B	C	D
CIRCLING	2300-1¼ 1481 (1500-1¼)	2300-1½ 1481 (1500-1½)	2300-3 1481 (1500-3)	NA

SW-3, 22 OCT 2009 to 19 NOV 2009

SW-3, 22 OCT 2009 to 19 NOV 2009