

RNAV (GPS) RWY 9

RIVERSIDE MUNI (RAL)

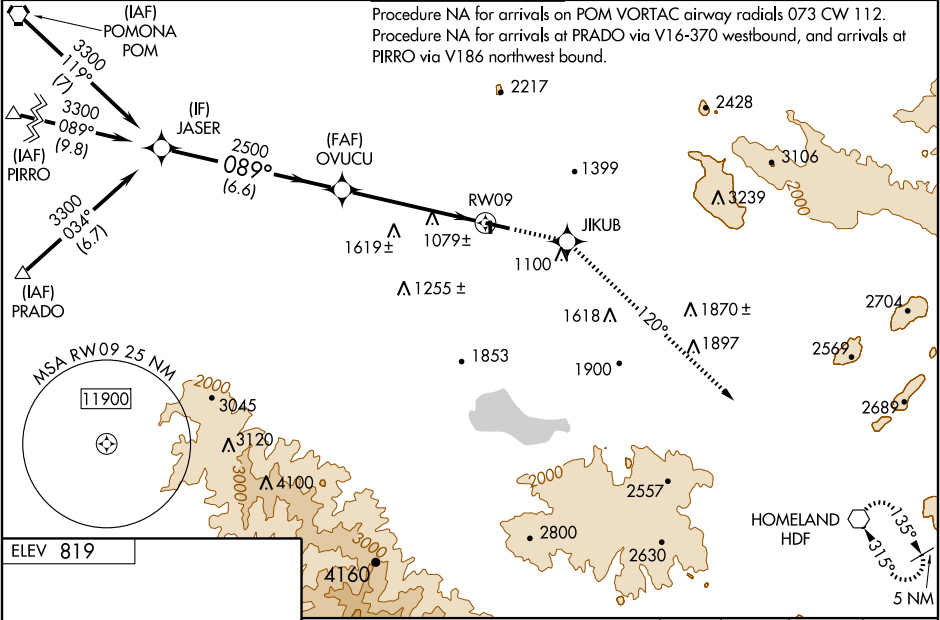
WAAS CH 50203 W09A	APP CRS 089°	Rwy Idg TDZE 795 Apt Elev 819	5401
--	------------------------	---	-------------

▽ Circling NA for Cat D north of Rwy 9-27.
△ For uncompensated Baro-VNAV systems, LNAV/VNAV NA below -16°C (4°F) or above 47°C (117°F).
 When local altimeter setting not received, use Chino altimeter setting and increase all DAs/MDAs 60 feet, and LPV and LNAV/VNAV all visibilities ¼ mile. VDP and Baro-VNAV NA when using Chino altimeter setting.
 When VGSi inoperative, circling to Rwy 34 NA at night.
 For inoperative MALSRS, increase LPV all Cats visibility to 1¼. When using Chino altimeter setting increase LPV all Cats visibility to 1½.

MALSRS

MISSED APPROACH: Climb to 6000 direct JIKUB and via 120° track to HDF VOR and hold, continue climb-in-hold 6000.

ATIS 128.8	SOCAL APP CON 135.4 377.125	RIVERSIDE TOWER * 121.0 (CTAF) 257.8	GND CON 121.7	UNICOM 122.95
----------------------	---------------------------------------	--	-------------------------	-------------------------

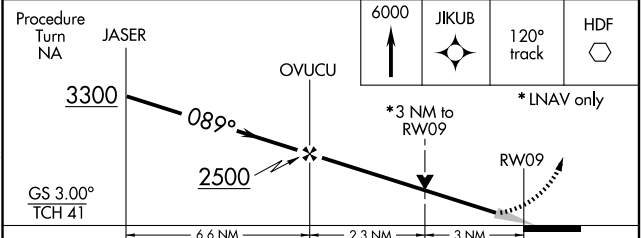


SW-3, 22 OCT 2009 to 19 NOV 2009

SW-3, 22 OCT 2009 to 19 NOV 2009

ELEV 819

REIL Rwy 27
 MIRL Rwys 9-27 and 16-34



CATEGORY	A	B	C	D
LPV DA		1120-¾	325 (400-¾)	
LNAV/VNAV DA		1473-2	678 (700-2)	
LNAV MDA	1760-¾ 965 (1000-¾)	1760-1 965 (1000-1)	1760-2½	965 (1000-2½)
CIRCLING	1760-1¼ 941 (1000-1¼)	1760-1½ 941 (1000-1½)	1760-3	941 (1000-3)