


ILS or LOC RWY 9

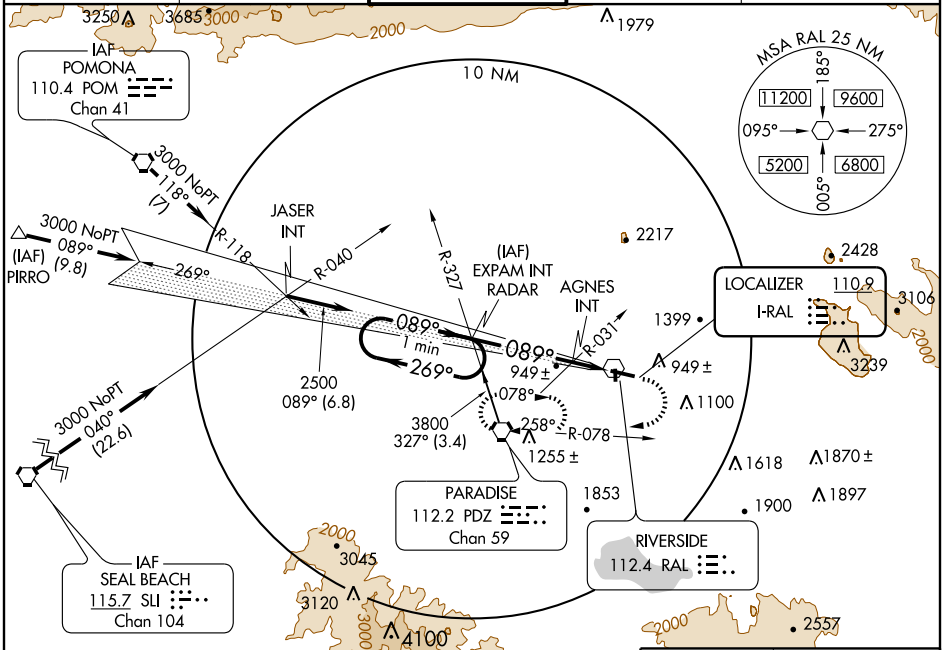
RIVERSIDE MUNI (RAL)

LOC I-RAL 110.9	APP CRS 089°	Rwy Idg TDZE Apt Elev	5401 794 818
---------------------------	------------------------	-----------------------------	---

▼ For inoperative MALSR increase AGNES FIX MINIMUMS S-LOC Cat D visibility to 1 1/4. Autopilot coupled approach NA below 1440.
▲ Circling NA north of Rwy 9-27 for Cat D.

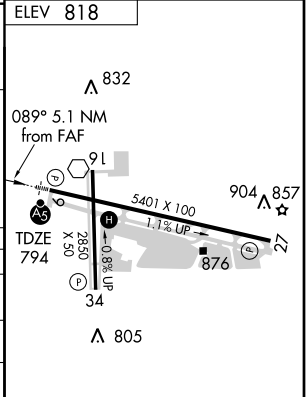
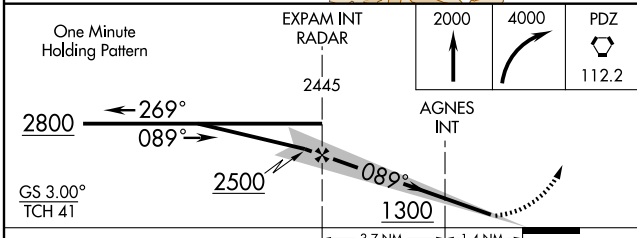
MALSR  **MISSED APPROACH:** Climb to 2000 then climbing right turn to 4000 direct PDZ VORTAC and hold.

ATIS 128.8	SOCAL APP CON 135.4 377.125	RIVERSIDE TOWER ★ 121.0 (CTAF) 257.8	GND CON 121.7	UNICOM 122.95
----------------------	---------------------------------------	---	-------------------------	-------------------------



SW-3, 22 OCT 2009 to 19 NOV 2009

SW-3, 22 OCT 2009 to 19 NOV 2009



CATEGORY	A	B	C	D
S-ILS 9	994-1/2 200 (200-1/2)		994-3/4 200 (200-3/4)	
S-LOC 9	1300-1/2	506 (500-1/2)	1300-1	506 (500-1)
CIRCLING	1300-1 482 (500-1)	1360-1 542 (600-1)	1620-2 1/4 802 (900-2 1/4)	1620-2 1/2 802 (900-2 1/2)
AGNES FIX MINIMUMS				
S-LOC 9	1200-1/2 406 (400-1/2)	1200-3/4 406 (400-3/4)	1200-1 406 (400-1)	
CIRCLING	1260-1 442 (500-1)	1360-1 542 (600-1)	1620-2 1/4 802 (900-2 1/4)	1620-2 1/2 802 (900-2 1/2)

REIL Rwy 27
MIRL Rlys 9-27 and 16-34 **Ⓛ**
FAF to MAP 5.1 NM

Knots	60	90	120	150	180
Min:Sec	5:06	3:24	2:33	2:02	1:42