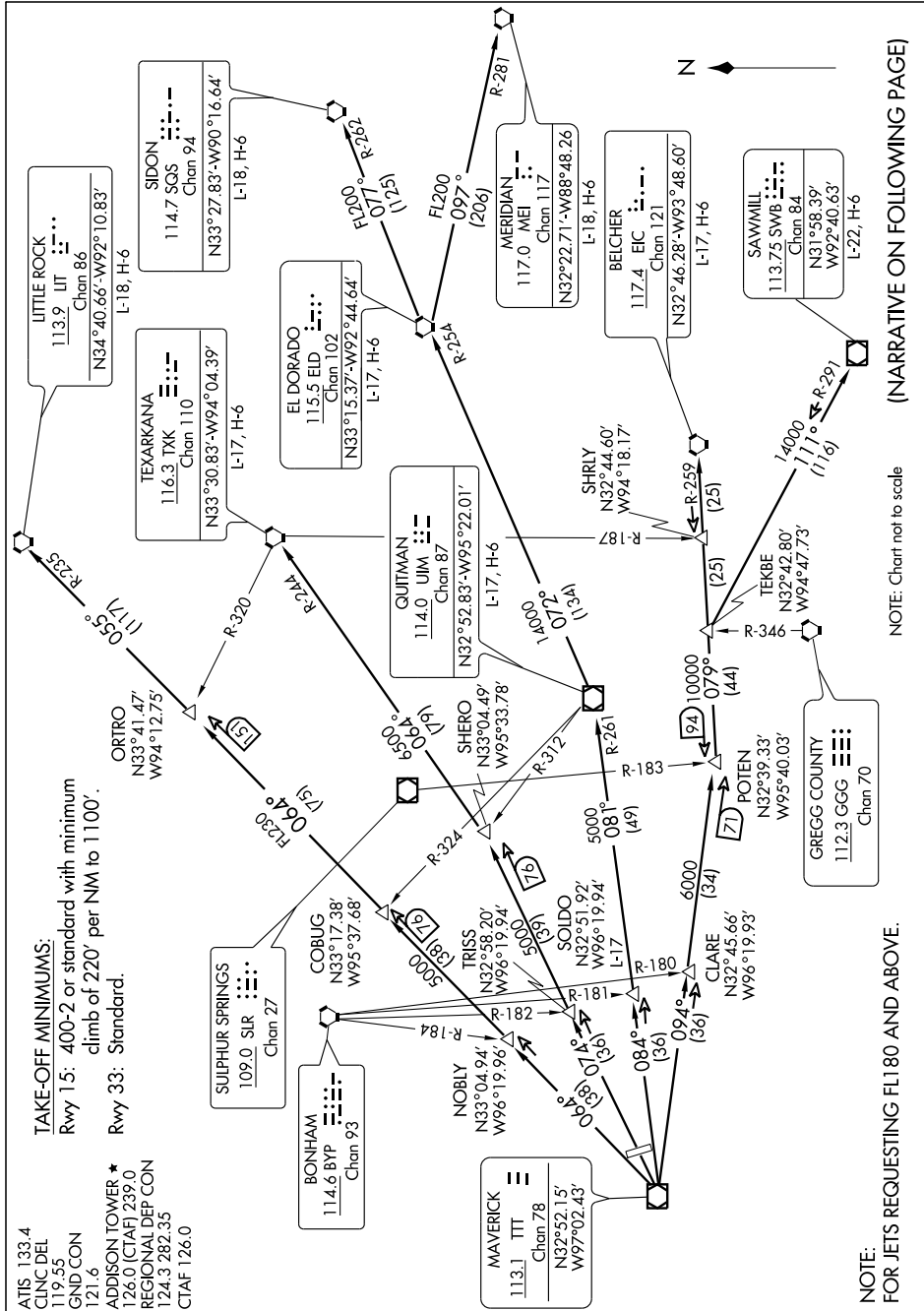


SC-2-22 OCT 2009 to 19 NOV 2009

ATIS 133.4
 CLNC DEL 119.55
 GND CON 121.6
 ADDITION TOWER *
 126.0 (CTAF) 239.0
 REGIONAL DEP CON
 124.3 282.35
 CTAF 126.0

TAKE-OFF MINIMUMS:
 Rwy 15: 400-2 or standard with minimum
 climb of 220' per NM to 1100'.
 Rwy 33: Standard.



(NARRATIVE ON FOLLOWING PAGE)

NOTE: Chart not to scale

SC-2, 22 OCT 2009 to 19 NOV 2009

NOTE:
 FOR JETS REQUESTING FL180 AND ABOVE.