

# RNAV (GPS) Z RWY 21

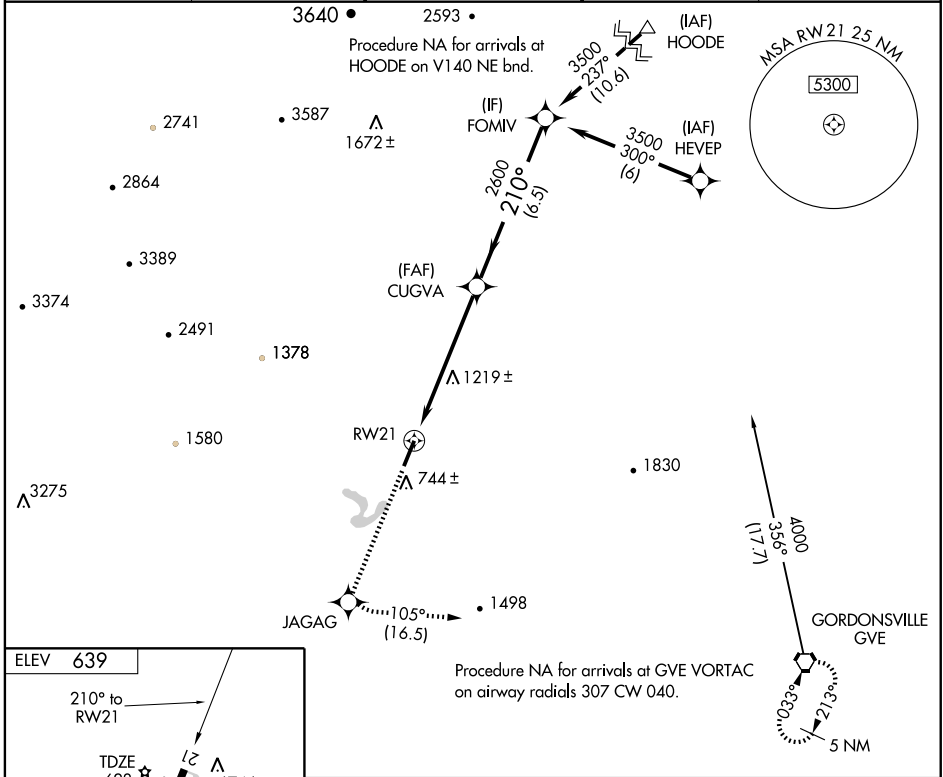
CHARLOTTESVILLE-ALBEMARLE (CHO)

WAAS CH <b>45602</b> <b>W21A</b>	APP CRS <b>210°</b>	Rwy ldg TDZE Apt Elev	<b>6001</b> <b>628</b> <b>639</b>
--	------------------------	-----------------------------	---

**⚠** Circling requires descent on RNAV glidepath to MDA. DME/DME RNP-0.3 NA. If local altimeter setting not received, use Staunton/Waynesboro/Harrisonburg altimeter setting and increase all DA's/MDAs 140 feet.

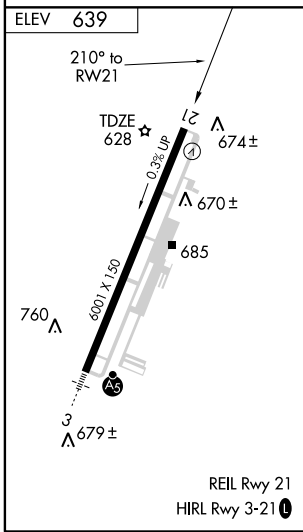
**⚠** MISSED APPROACH: Climb to 4000 direct JAGAG and left turn via 105° track to GVE VORTAC and hold.

ATIS <b>118.425</b>	POTOMAC APP CON <b>132.85 257.75</b>	CHARLOTTESVILLE TOWER * <b>124.5 (CTAF) 0 338.275</b>	GND CON <b>121.9 338.275</b>	UNICOM <b>122.95</b>
------------------------	---	--	---------------------------------	-------------------------



NE-3, 22 OCT 2009 to 19 NOV 2009

NE-3, 22 OCT 2009 to 19 NOV 2009



4000	JAGAG	105° track	GVE	Procedure Turn NA
			CUGVA	FOMIV
	RW21		210°	3500
			2600	GS 3.00° TCH 50
	6 NM		6.5 NM	
CATEGORY	A	B	C	D
LPV DA	878-1 250 (300-1)			
CIRCLING	1160-1 521 (600-1)	1160-1½ 521 (500-1½)	1560-3 921 (1000-3)	