

RNAV (GPS) Y RWY 21

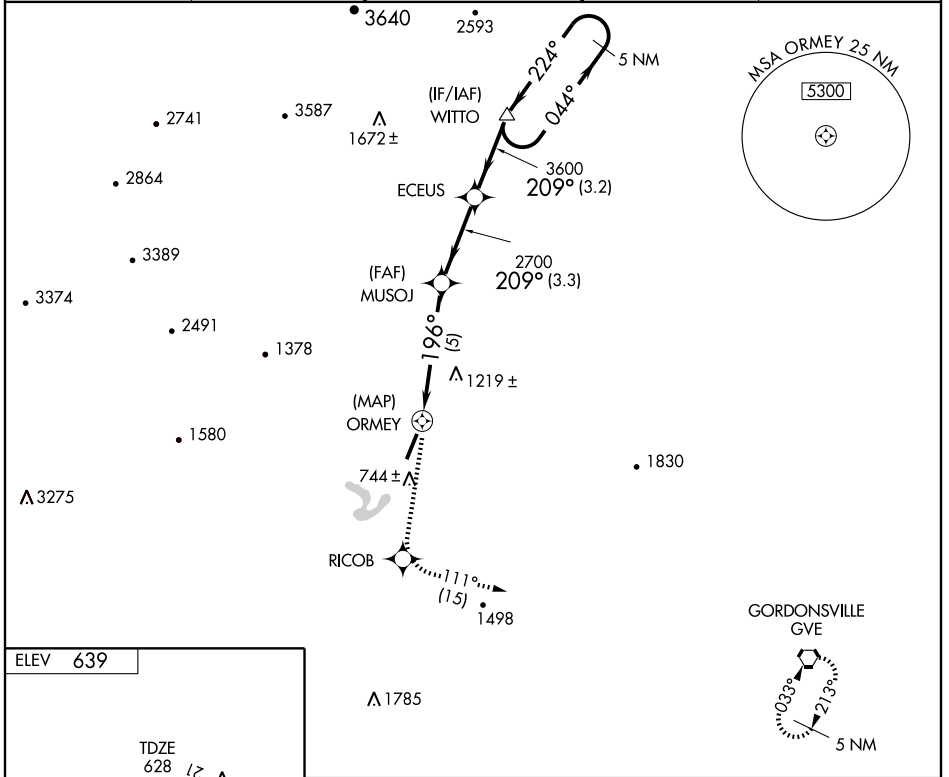
CHARLOTTESVILLE-ALBEMARLE (CHO)

APP CRS	Rwy Idg	6001
196°	TDZE	628
	Apt Elev	639

▼ DME/DME RNP-0.3 NA.
▲ If local altimeter setting not received, use Staunton/Waynesboro/Harrisonburg altimeter setting and increase all MDAs 140 feet.

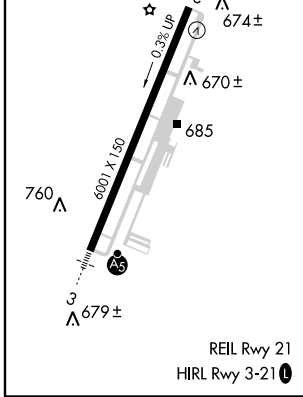
MISSED APPROACH: Climb to 4000 direct RICOB and via 111° track to GVE VORTAC and hold.

ATIS 118.425	POTOMAC APP CON 132.85 257.75	CHARLOTTESVILLE TOWER* 124.5 (CTAF) 0 338.275	GND CON 121.9 338.275	UNICOM 122.95
------------------------	---	---	---------------------------------	-------------------------



NE-3, 22 OCT 2009 to 19 NOV 2009

NE-3, 22 OCT 2009 to 19 NOV 2009



4000	RICOB	111° track	GVE	5 NM Holding Pattern
CATEGORY	A	B	C	D
LNAV MDA	1380-1 752 (800-1)	1380-1¼ 752 (800-1¼)	1380-2¼ 752 (800-2¼)	1380-2½ 752 (800-2½)
CIRCLING	1380-1 741 (800-1)	1380-1¼ 741 (800-1¼)	1380-2¼ 741 (800-2¼)	1560-3 921 (1000-3)