

# RNAV (GPS) RWY 3

CHARLOTTESVILLE-ALBEMARLE (CHO)

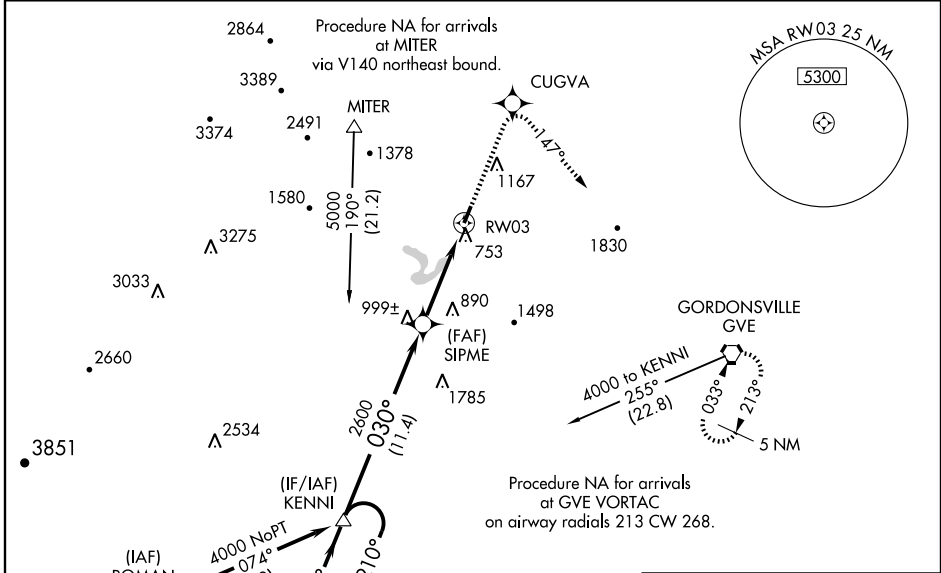
WAAS CH <b>61105</b> <b>W03A</b>	APP CRS <b>030°</b>	Rwy Idg <b>6001</b> TDZE <b>639</b> Apt Elev <b>639</b>
--	------------------------	---

**⚠** If local altimeter setting not received, use Staunton-Waynesboro-Harrisonburg altimeter setting and increase all DAs/MDAs 140 feet.  
**⚠** VDP NA when using Staunton-Waynesboro-Harrisonburg altimeter setting. Baro-VNAV NA when using Staunton-Waynesboro-Harrisonburg altimeter setting. For uncompensated Baro-VNAV systems, LNAV/VNAV NA below -16°C (4°F) or above 47°C (116°F). For inoperative MALSR, increase LPV visibility to 1 mile all Cats. DME/DME RNP-0.3 NA.

**MALSR**

**MISSED APPROACH:**  
Climb to 4000 direct CUGVA and right turn via 147° track to GVE VORTAC and hold.

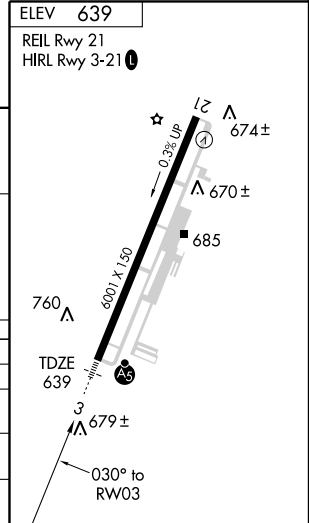
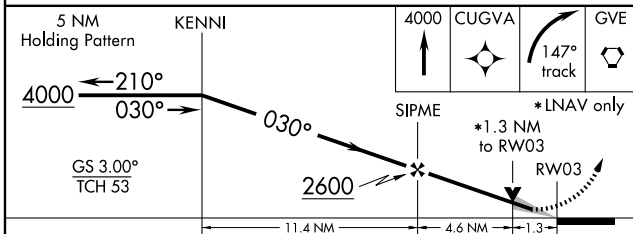
ATIS <b>118.425</b>	POTOMAC APP CON <b>132.85 257.75</b>	CHARLOTTESVILLE TOWER ★ <b>124.5 (CTAF) 0 338.275</b>	GND CON <b>121.9 338.275</b>	UNICOM <b>122.95</b>
------------------------	---	--	---------------------------------	-------------------------



NE-3, 22 OCT 2009 to 19 NOV 2009

NE-3, 22 OCT 2009 to 19 NOV 2009

ELEV <b>639</b>
REIL Rwy 21
HIRL Rwy 3-21



CATEGORY	A	B	C	D
LPV DA	903-1/2		264 (300-1/2)	
LNAV/ VNAV DA	1100-1		461 (500-1)	
LNAV MDA	1120-1/2	481 (500-1/2)	1120-3/4 481 (500-3/4)	1120-1 481 (500-1)
CIRCLING	1160-1	521 (600-1)	1160-1 1/2 521 (600-1 1/2)	1560-3 921 (1000-3)